

CLASSIC line

Safety storage cabinets in modern design



**Type 90**

Safety storage cabinets  
with wing door technology

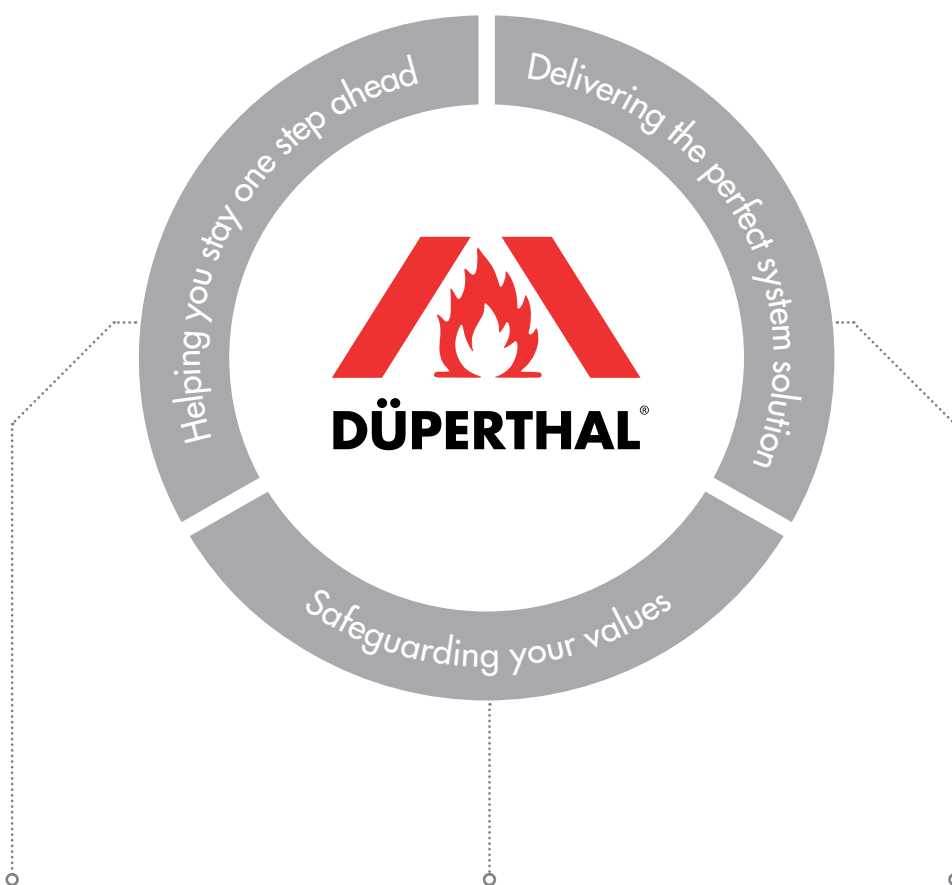
DÜPERTHAL – constant reassurance





# Welcome to DÜPERTHAL

As a leading German quality and technology enterprise, we set the standards when it comes to designing system solutions for the process-optimised storage of chemicals and hazardous materials. All of our products and solutions are tailored specifically to meet your requirements. In addition to maximum safety, they offer the highest levels of effectiveness and efficiency – also in situations where there is no risk of fire. We are therefore providing you with constant reassurance. This is what we, as a family-run company, stand for. The original is what we stand for.



## Always a step ahead

You get a strong and active partner with us. Our aim is to always stay one step ahead. All of our products exceed the prescribed standards. The same applies to our work with you. We provide honest analyses and openly discuss challenges and propose improvements, helping you to always identify the ideal solution.

## Safeguarding your values

For more than 40 years, we have been the industry standard as Europe's first manufacturer of safety storage cabinets. We have proven our technical and business management competency with successful projects world wide. And we always want to improve. We are continually enhancing our safety solutions - so that you can protect your values with us in the future.

## Delivering the perfect system solution

DÜPERTHAL is the only supplier with whom not only the high-quality, standard products are TÜV certified, but also your individually tailored system solutions. There is no need for on-site acceptance. Whether consultation, components, installation, or maintenance - we want to always offer you the best possible value. In product safety and from a business management perspective.



## Constant development for your safety

We don't rest on our good reputation. Because we are aware that your work is constantly becoming more complex. That's why your demands on our safety solutions are increasing. In order to meet these requirements, we are continuously pushing ahead with further developing our products. We invest time, money, passion and above all one thing: commitment.

---

### Did you know that ...

- » the name DÜPERTHAL stands for full service?
- » DÜPERTHAL markets more than just products?
- » the internet-enabled Cabi2Net brings smart technologies into the workplace?
- » the system solutions from DÜPERTHAL are more than just cabinets?
- » you profit economically and technologically from the wide range of solutions

You can find detailed answers to these questions and further useful information on the following pages - compact, practical, and forward-looking!



# A ground-breaking innovation

## Cabi2Net

Simple, safe, effective – the Cabi2Net from DÜPERTHAL is revolutionising the central control of work processes. With every internet-enabled end device, Cabi2Net offers you a virtual look into your safety storage cabinet and information, example about fill: fill levels, ventilation functionali , and provides warning notices.

Cabi2Net can be easily scaled, expandable as necessary through additional modules and can even be integrated into general building automation.



### HARDWARE

- Internet capable system
- Processes sensor signals (fill level, pressure flow rate, and more)
- Controls signal lights, warnings, valves and more



### SOFTWARE

- All cabinets can be activated separately
- Digital real-time protocol
- Operate with keyboard, mouse or touch screen



### NEW FUNCTIONS

- One interface, everything under control
- Planning of resource-conserving container exchanges
- Remote access to important data and information



» FIND OUT MORE  
IN PRODUCT SECTION 6.



## Company and service overview ..... 10

Our full-service promise.....	10
Reliable 90 minutes of protection in case of fire .....	16
High Quality safety storage cabinets for maximum fire protection .....	24
Tested safety - Made in Germany .....	26
Explosion and health protection.....	27
Future orientation and responsibility.....	28

# 1

## Safety storage cabinets for storage ..... 30

### for flammable liquids – Type 90

1.1 CLASSIC line with wing doors .....	30
1.2 PREMIUM line with folding doors.....	66
1.3 COMFORT line with pneumatically controlled folding doors.....	88
1.4 COMPACT line for closed bulk containers up to 200 litres (52.83 gal) ....	98
1.5 UTS ergo line® and BENCH line for the under-bench.....	110

### for combined storage or non-flammable media

1.6 HSC UTS ergo line® and hazardous substances centre .....	136
1.7 ACID line acids and lye cabinets.....	152
1.8 Chemical cabinets.....	166
1.9 Environmental cabinets .....	172
1.10 Toxic cabinets.....	174

### for flammable liquids – Type 30

1.11 BASIC line with wing doors.....	176
--------------------------------------	-----



## **2** Safety storage cabinets for supply and disposal ..... 190

for flammable liquids – Type 90

2.1 TAP line – for supplies from containers .....	198
2.2 SUPPLY line – for supplies from drums .....	209
2.3 COMPLEX line – for filling and transferrin .....	219
2.4 ACTCOM line – systems for supply and disposal .....	227
2.5 DISPOSAL line   HPLC service station - for disposal .....	233
2.6 VisiCon® – waste collection system .....	255

## **3** Safety storage cabinets for pressurised gas cylinders ..... 262

for inner storage of pressurised gas cylinders - Type G90

3.1 SUPREME line plus.....	270
----------------------------	-----

for inner storage of pressurised gas cylinders - Type G30

3.2 ECO line plus .....	281
-------------------------	-----

for outer storage of pressurised gas cylinders

3.3 Gas cylinder depots.....	291
3.4 Gas cylinder containers and boxes .....	292
3.5 Handling of gas cylinders .....	293

## **4** Safety storage cabinets for refrigerated storage ..... 296

for refrigerated storage of flammable liquids – Type 90

4.1 COOL standard XL .....	301
4.2 COOL dual XL .....	308
4.3 COOL UTS ergo line® .....	316

## 5

### Safety storage cabinets for clean rooms and batteries ..... 324

for batteries – Type 90

5.1 BATTERY XL ..... 327

5.2 COOL battery XL ..... 336

for flammable liquids in clean rooms – Type 90

5.3 CLASSIC line plus ..... 346

for non-flammable liquids in clean rooms

5.4 ACID line pure ..... 353

## 6

### Systems for process reliability ..... 360

Networking for maximum safety

6. Cabi2Net, sensors and SmartControl ..... 360

## 7

### Ventilation of safety storage cabinets ..... 374

7.1 Exhaust air systems ..... 380

7.2 Filter systems ..... 382

7.3 Ventilators ..... 384

## 8

### Safety containers and cleaning containers ..... 386

8.1 for liquid hazardous substances ..... 389

8.2 Safety funnels ..... 400

8.3 for solid hazardous substances ..... 402

8.4 Cleaning containers ..... 403

8.5 Cleaning tanks ..... 407





<b>9</b>	<b>Storage equipment and accessories</b> .....	408
	9.1 Drum safety accessories .....	411
	9.2 Pump systems .....	413
	9.3 Drum transport and handling .....	415
	9.4 Safety storage containers .....	416
	9.5 Shelf systems for hazardous substances .....	418
	9.6 Depots and collection trays .....	419
	9.7 DÜANA tank fillin .....	422

<b>10</b>	<b>Absorbers and binders</b> .....	424
	10.1 Non-woven fabrics made of micro-fibres/absorber .....	427
	10.2 Emergency kits .....	428
	10.3 Granulate binders .....	429

<b>11</b>	<b>Emergency showers</b> .....	430
	11.1 Eye showers .....	433
	11.2 Body showers .....	436
	11.3 Combination showers .....	437

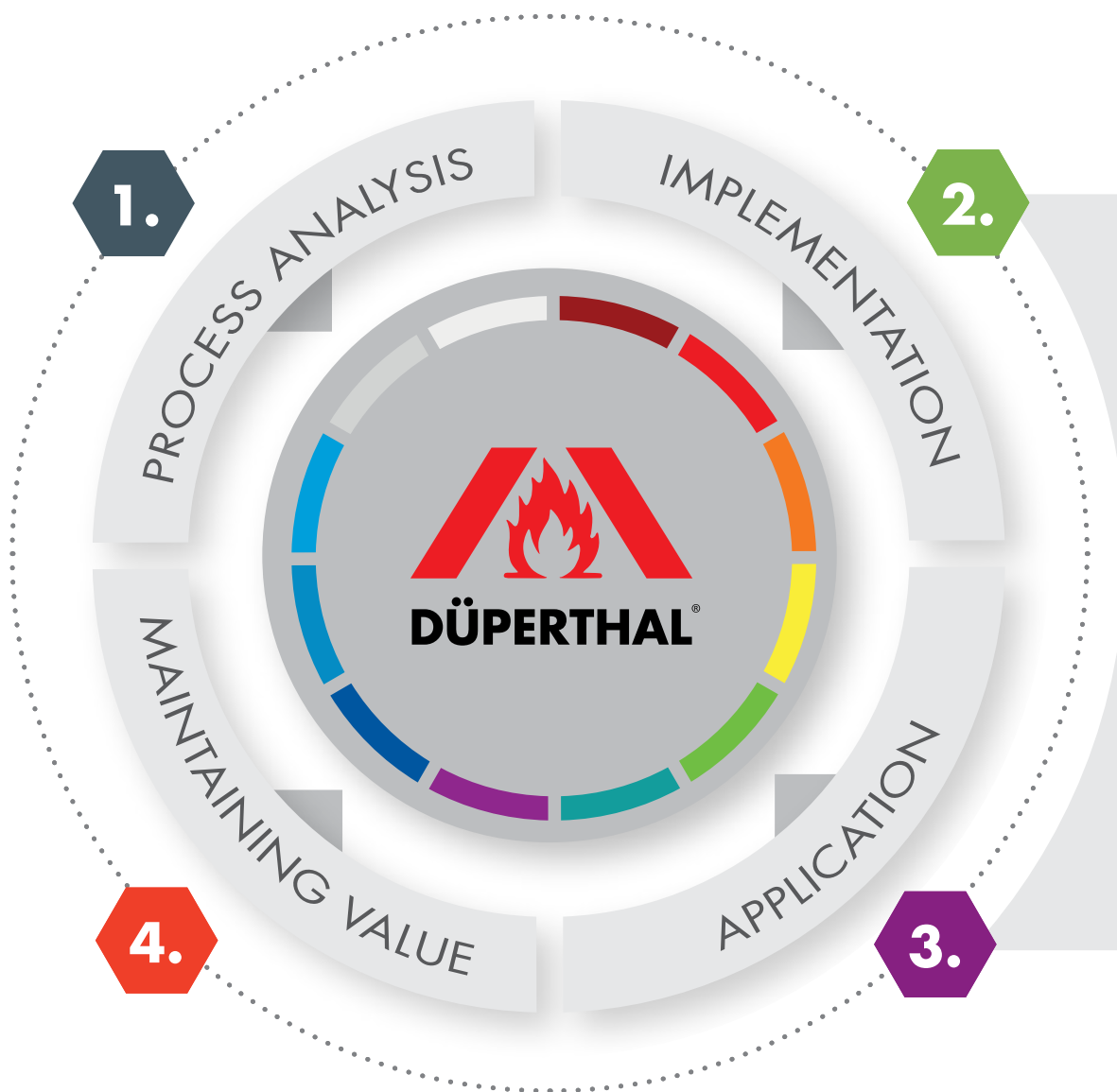
<b>12</b>	<b>Safety ashtrays and waste paper baskets</b> .....	438
	12.1 Safety ashtrays and cigarette butt collectors .....	441
	12.2 Self-extinguishing waste-paper baskets .....	444

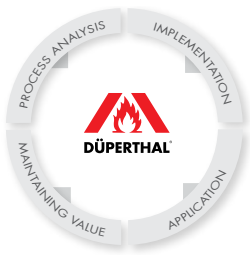
<b>i</b>	<b>Additional information</b> .....	446
	Comfort service agreement - sample contract .....	446
	Checklist for shipping cabinets .....	448

# From the process to realisation: We go with you

## We offer products and service for every requirement

DÜPERTHAL offers system solutions for process-optimised storage of chemicals and hazardous substances. for scientific research, development and production. Our goal is to always fulfil your individual requirements with customised solutions. This is why you can expect not only outstanding certified products from us, but also outstanding full service.





## Services throughout the process

One of our distinctive features is our profound knowledge of our customers' processes. For more than 40 years, we have stood by you as an active companion and consultant: from the analysis of your individual requirements, to the planning and implementation of the optimal solution, through to permanent maintenance.



## Innovative products for every situation

Our product portfolio for the storage, use and disposal of chemicals and hazardous substances is as diverse as the requirements for their handling. In addition to high-quality, certified safety storage cabinets, we offer a variety of fitting options and accompanying products for every need, however specific



### Technical added advantages

- » Safety storage cabinets and accompanying products for every application
- » More occupational safety and environmental protection through maximum fire protection
- » Maximum comfort during use and operation

### Economic added advantages

- » Optimisation of processes and work processes.
- » Continuous value retention
- » Excellent service throughout the process

## Tailored to your processes



### 1. Process analysis

#### Your problem is our challenge

Your processes should run optimally - in every respect. Our experts take a closer look at safety-relevant and profitability aspects. You are guaranteed the greatest possible flexibility in implementation. Because we have the right solution for every situation.



#### From process analysis to concept

Together with you on site, our experts will collect extensive data in an as-is analysis. Based on this information and your requirements, a target state is defined in a task folder.



#### Modular and tested system solutions

We use the full range of DÜPERTHAL's standard technologies and supplement them with modular and type-tested systems, adapted to your requirements.



### 2. Implementation

#### Safe and economical solutions

Not only do you get a technically perfect system from us, but we also make sure that you have to put in as little effort as possible. We deliver our products directly to the site and take over the implementation. Full service is our principle.



#### Shipment and delivery

Safety for us starts with the delivery of the product. The specialist carrier appointed by us works according to a detailed checklist and therefore ensures that our products are professionally transported to and installed in their final place of use - delivery just-in-time and just-in-place.



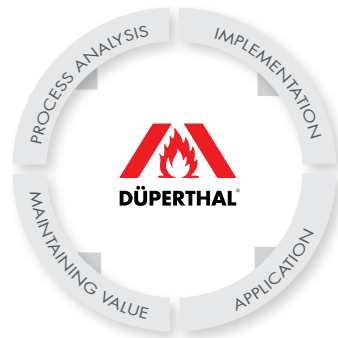
#### Project support on site

The professional handling of complex projects requires more than just delivering safety storage cabinets. DÜPERTHAL therefore provides comprehensive support for your national and international projects with planning, delivery service, construction site support and training of the lab managers and users.



#### Installation, implementation and final acceptance

Our team of specialists ensures a smooth and optimal assembly process on site. After complete installation of all components, the commissioning and joint final acceptance will be carried out with you.



### 3.

## Application

**Optimal integration – safe and economical solutions**  
We work conscientiously to optimise your process flows sustainably. This means that we attach great importance to documentation and training. In addition, the latest technology is used for evaluations. In this way, we integrate our products ideally into your existing structures.



#### Documentation

A detailed operations manual is supplied with each product, especially for complex projects. This already includes the CE certificate of conformance and the type certificate for the patented system solutions tested by independent third parties.



#### Training and risk assessment

In order that you are sure that our components can be used professionally and can be operated without any risk, we will be happy to train the responsible persons directly on the spot. The points treated can be included in your risk assessment.



#### Evaluation

With the Internet-capable Cabi2Net, all relevant operating parameters of the safety storage cabinets can be constantly monitored and evaluated. The query can be sent simply from a mobile phone, tablet or PC. This also safeguards your processes and helps you to make the internal value chain even more efficient

### 4.

## Maintaining value

#### Product life cycle - maximum safety

To ensure the functionality and safety of your system solution in the long term, we recommend an annual inspection. Our service agreement guarantees you maintenance and spare parts long after installation and commissioning.



#### Occupational safety and health OSHA / EU-OSHA

When dealing with hazardous substances, the highest priority is the protection of employees and the environment. Therefore, DÜPERTHAL safety storage cabinets guarantee compliance with the requirements of the Occupational Safety and Health Administration (OSHA and EU-OSHA). We will clarify all relevant topics and train you in the safe handling of our products

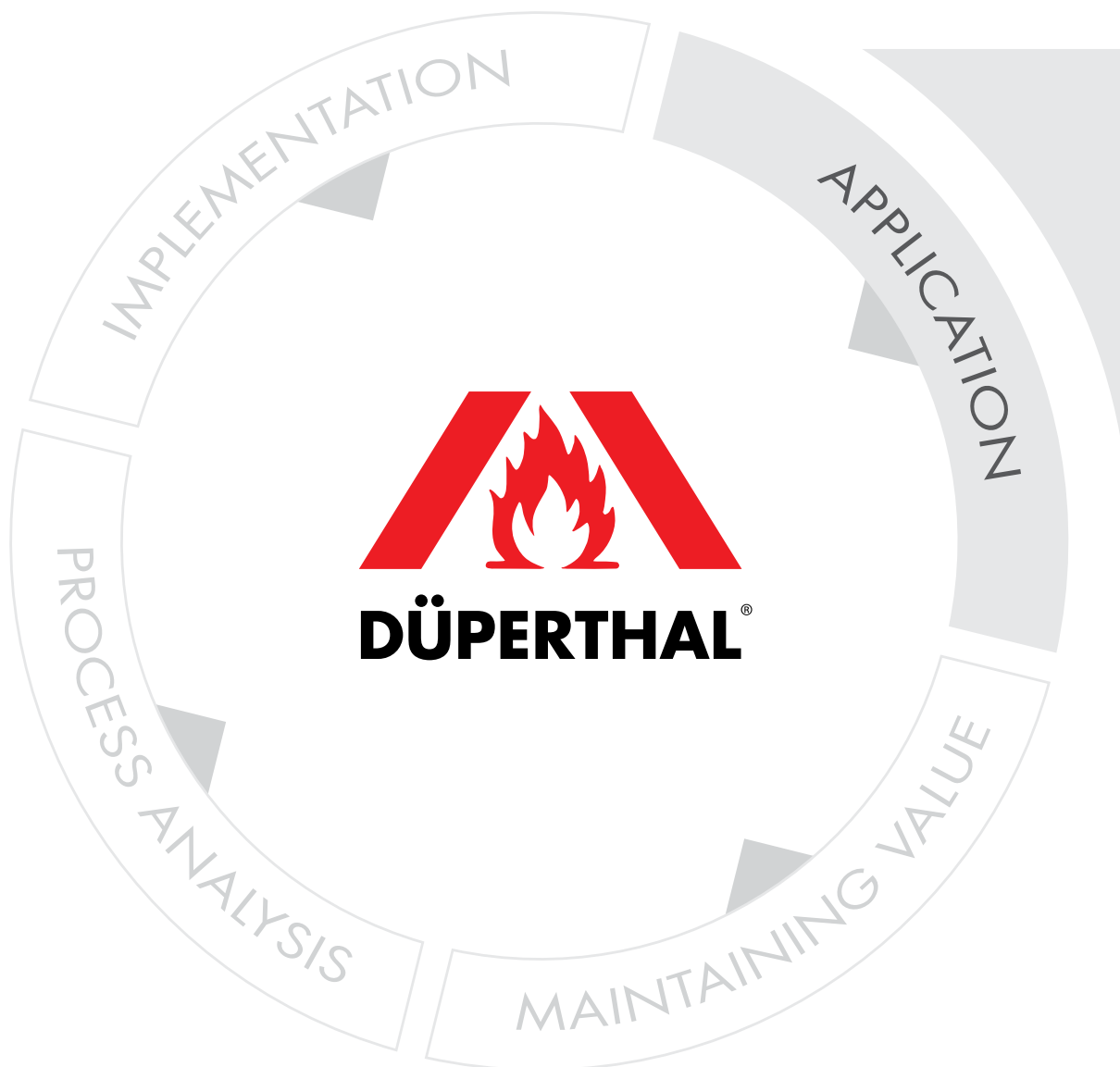


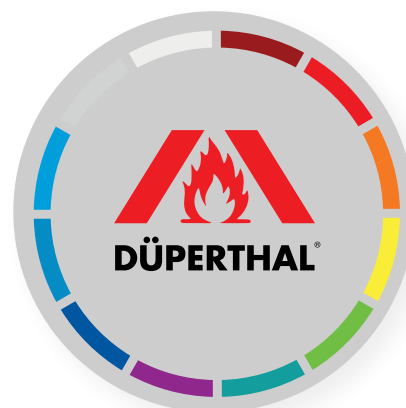
#### Permanent service agreement with regular maintenance and service

Highly complex processes rely on robust structures. With our service agreement, we can safeguard our reliable system solutions even better in your interest. The annual maintenance also extends the manufacturer's guarantee. A double benefit for you - in terms of safety and profitability .

## Your Challenge – Our Solution

The handling of hazardous substances is subject to stringent regulations – for good reason. DÜPERTHAL can help you to meet all the relevant requirements whilst at the same time optimising your work processes. Based on the analysis of the actual status and the jointly defined objective, you receive an individually tailored and modular system solution from us. Thanks to our varied product range, you can design your laboratory and workplace flexibly and as needed





## 1. Storage

### Safely storing hazardous substances

We offer a wide range of products for the safe storage of sensitive hazardous goods. Up to 90 minutes of protection in case of fire ensures maximum safety.



## 2. Use

### Using products ergonomically

In addition to a large range of standard solutions, we have tailor-made solutions that integrate seamlessly into your workflows and optimise them.



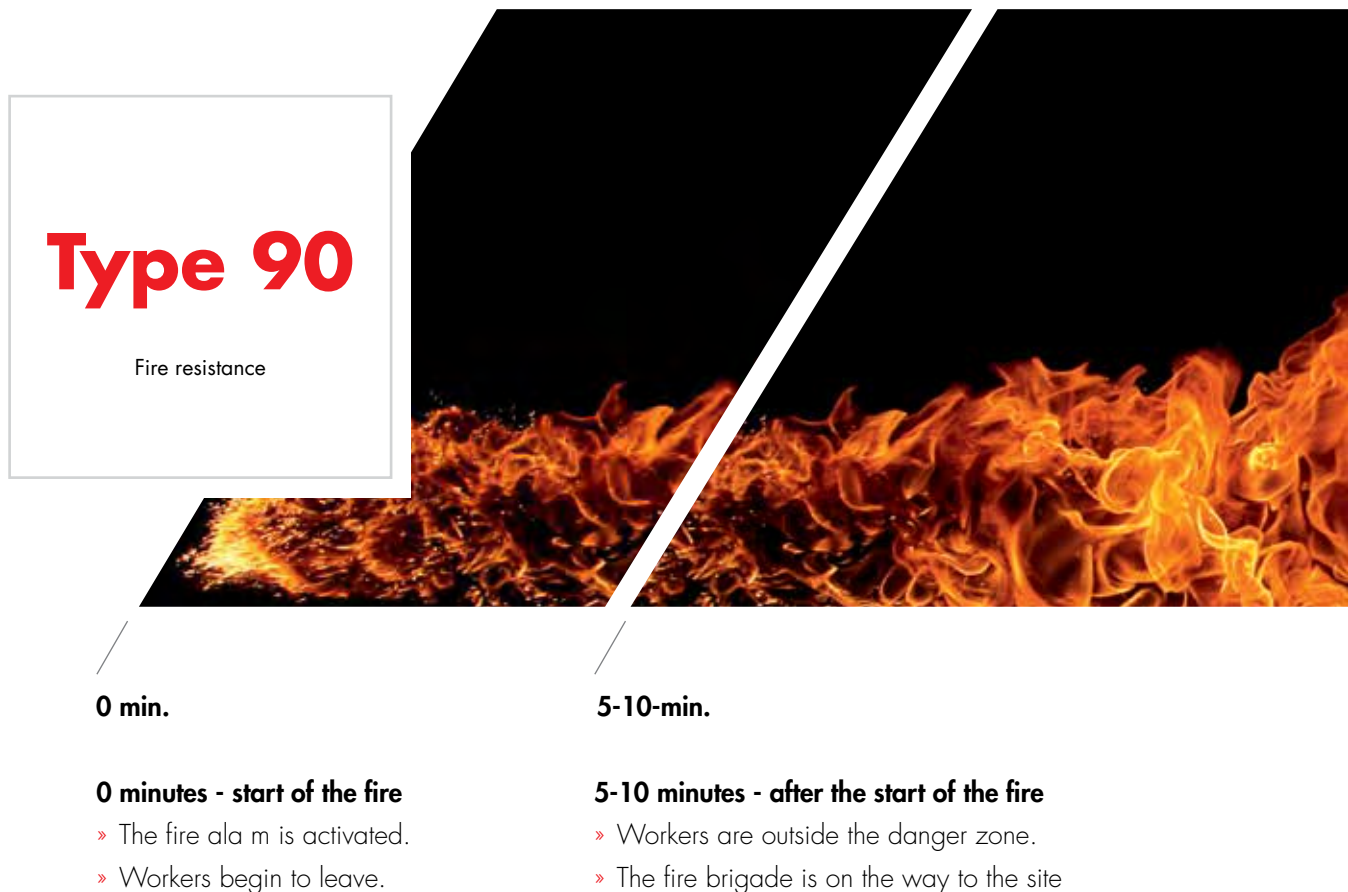
## 3. Disposal

### Disposing of materials in an environmentally sound manner

There are strict regulations for the disposal of dangerous goods. We provide a wide range of products and components for safe implementation in compliance with regulations.

## 90 minutes – Course of events and timetable of a fire

In the event of a fire, the 90 minutes of tested fire protection is the decisive factor in protecting people and minimising damage to property. DÜPERTHAL safety storage cabinets of fire resistance rating type 90 allow sufficient time for workers to leave the room in the event of a fire and allow the fire brigade sufficient time to get into the laboratory. Just before a smaller extinguishable fire from stored flammable substances causes an uncontrollable fire





The test of the cabinet under fire conditions is part of the standard. Each cabinet model is type-tested in a fire chamber in accordance with DIN EN 14470-1. The test parameters and test temperatures in the fire chamber and directly in the cabinet are specified in the standard, and further details are provided on the following pages.



10-15 min.

#### 10-15 minutes - after the start of the fire

- » The fire brigade is at the source of the fire

#### After 10 minutes of burn time

- » Safety storage cabinets with a fire resistance of 10 minutes are now losing their function.
- » The flammable substances are no longer safe
- » The fire brigade must fight the fire at a considerably increased risk.
- » Heavy damage is to be expected.

90 min.



#### Your benefits with the 90-minute technology

- » Safety storage cabinets Type 90 retain their function for 90 minutes.
- » The hazardous substances are stored safely for at least 90 minutes.
- » The fire brigade has considerably more time to extinguish the fire safely.
- » Reduction of the fire load and minimisation of damage.

## Fire chamber test according to DIN EN 14470-1

The fire resistance rating of safety storage cabinets in accordance with DIN EN 14470-1 is determined by the rise of temperature of the cabinet interior inside of a fire chamber according to the temperature-time curve in accordance with DIN EN 1363-1. Starting from an initial temperature of 20 +/- 5 °C and after the time until the temperature in the cabinet interior increases to 180 °C maximum, the cabinet is then classified as type 15, 30, 60 or 90 (analogous to time in minutes). Safety storage cabinets for pressurised gas cylinders are subjected to a comparable test in accordance with DIN EN 14470-2, details on this are provided on page 264.



### [ + Your economic advantage ]

Example calculation:  
(average values)

Cost of purchasing a  
safety storage cabinet  
tested fire resistance

**Profitability/Costs**

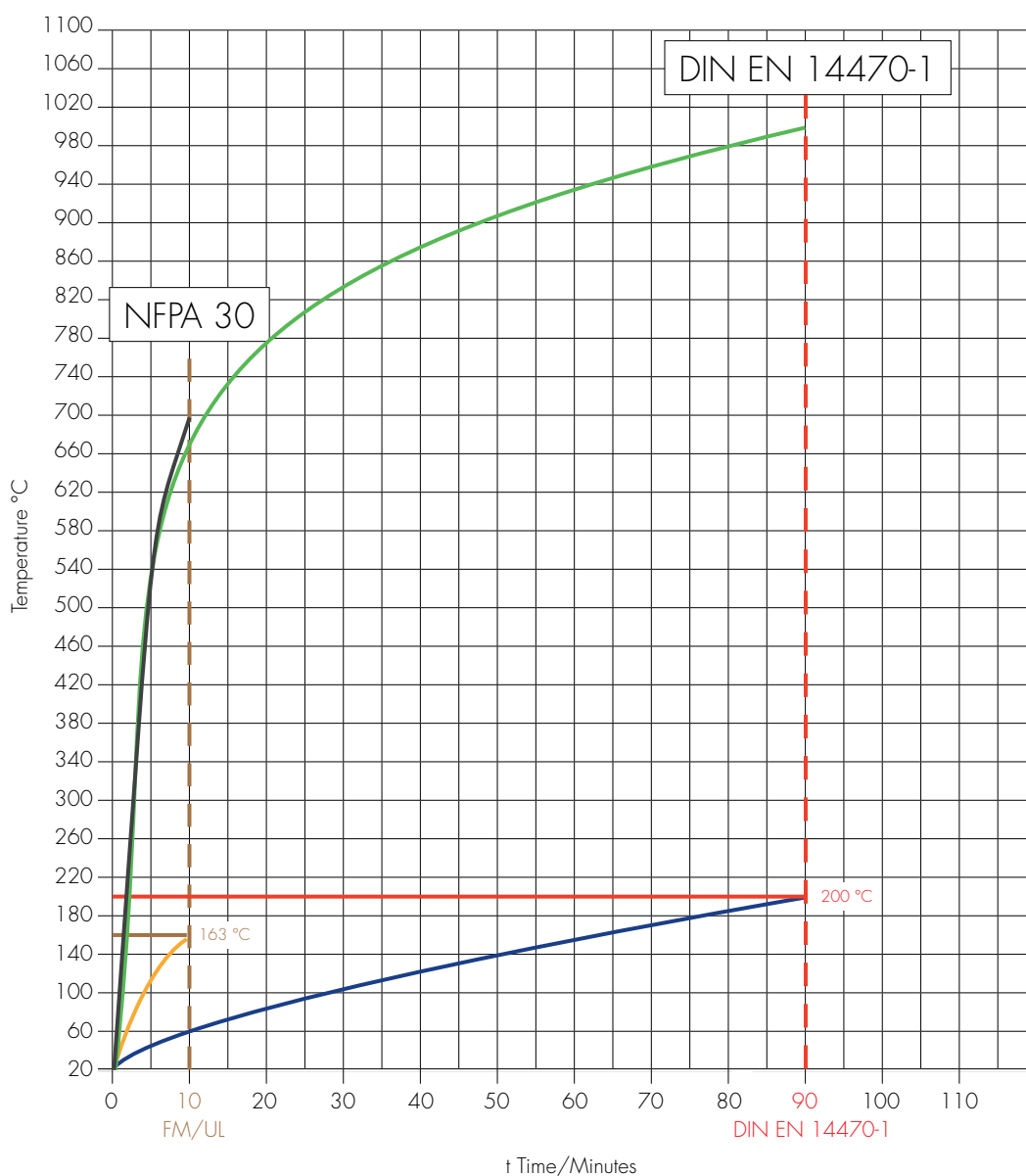
US standards      European standard  
FM/UL, NFPA 30      DIN EN 14470-1

€ 1,000                  € 2,430  
10 minutes              90 minutes

**100 € per min.      27 € per min.**

Video of an  
extreme test





Fire and explosion-proof safety storage cabinets Type 90 by DÜPERTHAL offer a reliable fire resistance of 90 minutes in accordance with DIN EN 14470-1.

**US standards according to FM/UL, NFWA 30**

- Maximum allowed temperature in the cabinet in acc. with FM/UL = 163 °C (325 °F).
- Temperature profile in accordance with NFWA 251 in the open fire chamber.
- Example of the rising temperature in an FM/UL cabinet during the fire test, monitored with 1 thermometer.

**European standard DIN EN 14470-1.**

- Maximum allowed temperature in the cabinet in acc. with DIN EN 14470-1 = 200 °C (392 °F).
- Temperature profile in accordance with DIN EN 1363-1 in the closed fire chamber.
- Example of the rising temperature in a Type 90 cabinet during the fire test, monitored with 11 thermometers.

## Fire resistance class – Type 90:

---

# 90 minutes of safety thanks to special construction

Utmost care is essential in the handling of hazardous substances. Our technology with maximum fire resistance helps you to achieve this. Thus, thanks to their special construction, our safety storage cabinets guarantee fire resistance of 90 minutes, type-tested according to DIN EN 14470-1.



**Type 90**

Fire resistance

### **Construction:**

- » The doors and the outer carcass are made of powder-coated sheet steel.
- » The inner carcass and the inside of the doors are made of high-quality decor panels.
- » There is a special insulation between the inner and outer carcasses, so that the heat cannot penetrate into the cabinet interior in case of fire
- » In case of fire, doors, drawers and ventilation openings for air supply and exhaust air are automatically closed and the door gaps as well as open joints are sealed by foam-forming gaskets.



**Your benefits through DÜPERTHAL safety storage cabinets Type 90:**

- » A chain reaction will be avoided in case of fire
- » Workers, the fire brigade, and rescue services will be protected.
- » Maximum fire protection for buildings and systems
- » Reduction of insurance contributions for fire protection is possible
- » Financial security, e.g. by reducing the risk of default of production and buildings.
- » Fulfilment of the requirements of risk management in accordance with ISO 9000 and ISO 14001.
- » Use of high-quality safety storage cabinets conserves resources and strengthens the image of your company.

## Test criteria, protection objectives and minimum requirements

The three essential requirements of a safety storage cabinet in accordance with DIN EN 14470-1 are the minimisation of the risk of fire, the minimisation of fumes released into the work environment, and the retention of possible leakages. The test requirements of the laboratory furniture standard DIN EN 14727 also ensure a minimum of quality.



**DIN EN 14470-1**  
**DIN EN 14727**

### Extracts from DIN EN 14470-1

#### Ventilation

- » To prevent an explosive atmosphere, the ventilation must be effective directly above the bottom tray.
- » Ventilation openings for air supply and exhaust air must self-close when the temperature reaches 70 °C (158 °F).

#### Interior fittings

- » The bottom tray for the restraint of possible leakages must still be functional even after the fire resistance test.
- » The shelves must be made of non-absorbent material, bear the permissible load over the duration of the fire and be at most 1.75 m (5.74 ft) above the floor.

#### Door technology

- » Complete self-locking of the doors within a maximum of

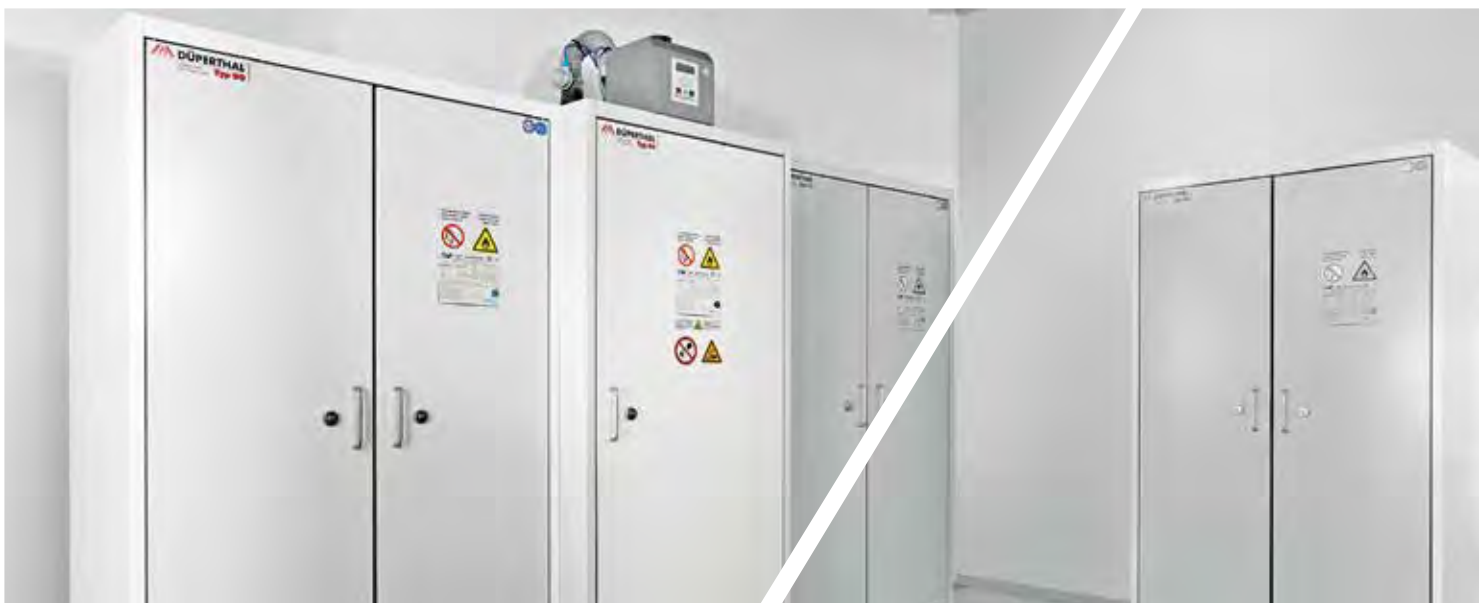
20 seconds, optionally, an arrest system with temperature release at 50 °C (122 °F) is possible.

- » Closing force between the main closing and opposite closing edge of the door must not exceed 100 Newtons.
- » Each wing of the door must be operational with one hand.
- » If the doors are lockable, the locking device must not prevent self-closing in case of fire.

#### Fire chamber test

- » Each cabinet model and size is type-tested in a fire chamber test in accordance with DIN EN 14470-1 Type 90.

Tested safety at a very high level including:



## Extracts from DIN EN 14727

### Static endurance test

- » Standing surfaces, e.g. storage shelves, are subject to a static load and impact tests and must not show any breakage or other damage.

### Dynamic load test

- » All components that move mechanically such as pull-out shelves, drawers and doors are tested with 50,000 cycles each. After the tests, the doors must close exactly and snap into place.



### Tested safety at a very high level including

- » Type-testing according to DIN EN 14470-1 by recognised test institutes (TÜV Süd, iBMB Braunschweig, ift Rosenheim).
- » TÜV-tested according to DIN EN 14727 (laboratory furniture standard).
- » Type 90 classification in accordance with DIN EN 14470-1.
- » GS/CE mark.
- » High Quality mark of approval for upper-level style, user-friendliness and increased lifetime.

# High-quality safety storage cabinets with maximum fire protection



### Your added advantage with DÜPERTHAL safety storage cabinets!

» **Maximum fire protection for your safety**

Maximum safety with Type 90 technology and automatic self-closing doors in case of fire

» **Upper-level style for your health**

Ventilation in every cabinet level with visual inspection of the butterfly valves, with a continuous earthing concept as a standard.

» **Increased lifetime for your investment**

Continuous testing in accordance with DIN EN 14727, even 80,000 instead of 50,000 cycles in the dynamic load test.





### 1 Ventilation

Ventilation in **every cabinet level** and visual inspection of the venting cut-off flaps

### 2 Earthing (system)

To prevent ignition hazards through earthing in accordance with TRGS 727, the bearing surfaces are conductively connected as a standard to the equipotential bonding saddles.

### 3 Automatic closing of the doors

In case of fire, a the mocouple automatically triggers the uninterrupted closing system via the non-wearing safety feature (functional principle similar to the air bag system).

### 4 Base

A setback base is the solution to ergonomic working and a safe position.

### 5 Lock arrangement

The ergonomic lock arrangement at handle level increases handling convenience.

### 6 Transport

Due to the base construction with removable base boards, the cabinet is accessible from all sides. As a result, simple transport, for example with a hand pallet truck, is possible.

# Compliance mark for DÜPERTHAL safety storage cabinets

## Solved internally, confi med externally and independently

For DÜPERTHAL, quality is the main focus. Proof of this is provided by the quality marks of approval awarded to each of our safety storage cabinets, in recognition of our comprehensive quality management system as per DIN EN ISO 9001. One basic condition here is that, apart from our own in-house inspections, production of the safety storage cabinets is continuously monitored by external accredited test institutes.



### Tested safety - Made in Germany

#### Tested safety at the highest level including

- » Type-tested according to DIN EN 14470-1 as well as DIN EN 14470-2 by recognised test institutes (TÜV Süd, iBMB Braunschweig, ift Rosenheim).
- » TÜV testing according to DIN EN 14727 (laboratory furniture standard).
- » GS/CE mark.
- » High Quality mark of approval for upper-level style, user-friendliness and increased lifetime.



**DÜPERTHAL Innovation** – sustainably protected technical inventions based on well over **50 national and international patents!**

**DIN EN**





What else should you pay attention to?

## Explosion and health protection

In accordance with DIN EN 14470, safety storage cabinets must be provided with supply and exhaust air connection in order to prevent hazardous vapours escaping into the working area by means of a technical exhaust air system. In this case, the ventilation must be carried out to the open air in a safe place. Alternatively, ATEX-compliant (2014/34 / EU) recirculating air filter systems have been tried and tested in practice in safety storage cabinets for solvents. In accordance with TRGS 510, safety storage cabinets without industrial ventilation must be earthed due to the increased danger potential.



» Exhaust air systems

» Filter systems



### Your added advantage with industrial ventilation!

#### » Preventing an explosive atmosphere

A concentration dilution can already be achieved in the safety storage cabinet from a 10-fold air exchange per hour, so that an ex-zone around the cabinet is avoided. Please note that a lab bottle that has been opened once can already be a permanent source of emissions.

#### » Minimisation of health risks

With industrial ventilation, an increased risk of explosion as well as odour pollution can be

counteracted. In practice, it might be necessary to set a higher air exchange.

#### » Effectiveness / Functionality

The ventilation must be effective immediately above the bottom tray, since solvent vapours are often heavier than air. The laboratory directive also requires that the extraction is applied directly at the point of danger. Therefore, all DÜPERTHAL safety storage cabinets are equipped with ventilation at each cabinet level.

# Our commitment to sustainable action

As an internationally operating family business with a company culture characterised by the community, we maintain clear values that characterise our daily thinking and action. In this way, we always have the big picture in mind in order to achieve satisfaction and success together with our customers and partners. This vision is committed to bringing the requirements of customers, the environment and society into harmony.



### DÜPERTHAL Sustainability

Good economic sense, ecological long-term vision and social care - these are the ingredients for our daily thinking and action.



### Economic aspects

The holistic view of the processes of our customers is deeply rooted in our corporate philosophy. This is how we create the basic conditions for optimised, safe and ergonomic work processes. Retaining the value of the products not only reduces costs. The increased lifetime of the safety storage cabinets also saves resources and saves energy for production.



### Ecological aspects

DÜPERTHAL is committed to environmental protection and resource efficiency. We attach great importance to the commitment to use locally available raw materials. The short transport routes from suppliers in the surrounding area help to reduce emissions of harmful substances. At the same time, the use of recyclable materials relieves the environment during production.



### Socio-cultural aspects

We promote and protect scientific research and development. With our products and services we increase safety in the workplace. We help our customers focus on the essentials - their work and the development of innovations that advance our society. Therefore, we do not limit ourselves to Germany. We document and certify our services in many countries and languages in order to implement our high standards on a comprehensive basis.

We continue the advancement of our company with the same diligence. For that is how we lay the the foundation stone for securing our future-oriented production sites and the preservation of valuable jobs in the region.

# Passive storage of flammable liquids





# 1

# Safety storage cabinets Type 90 for flammable liquids

Door technologies

1.1

CLASSIC line



Type  
90

1.2

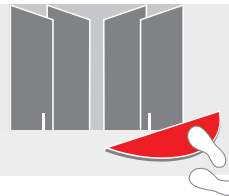
PREMIUM line



Type  
90

1.3

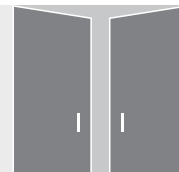
COMFORT line



Type  
90

1.4

COMPACT line



Type  
90

1.5

UTS ergo line®  
BENCH line



Type  
90





with **wing door technology**, interior fittings  
bottom tray, optionally storage shelves  
or pull-out shelves.



from page

**36**

with **folding door technology**, interior fittings  
bottom tray, optionally storage shelves,  
pull-out shelves or vario shelves.



**66**

with **folding door technology** and **pneumatic operation**  
with foot pedal, interior fittings bottom tra ,  
optionally storage shelves or vario shelves.



**88**

with **wing door technology**, interior fittings  
bottom tray with grating.



**98**

with **wing door technology**, interior fittings  
optionally bottom tray or automatically extending  
pull-out tray.



**110**

# Safety storage cabinets for non-flammable media or **combined** storage

**1.6** HSC line

Type  
90

**1.7** ACID line

**1.8** Chemical cabinet

Type  
90

**1.9** Environmental cabinet  
**1.10** Toxic cabinet

**1.11** BASIC line

Type  
30



For the combined storage of acids, lyes, toxins and flammable hazardous substances



from page

**136**

For the storage of aggressive liquids  
Interior fittings pull-out trays made of PE



**152**

For the storage of flammable and water-polluting substances.



**166**

**Environmental cabinet** – for the storage of water-polluting substances.  
**Toxic cabinet** – for the storage of hazardous substances.



**170**

with **wing door technology**, interior fitting bottom tray and shelves.



**176**



# CLASSIC line 1.1



## Safety storage cabinets with wing door technology



### Your added advantage with the CLASSIC line!

#### » Health

Ventilation on each cabinet level provides optimised air exchange.

#### » Safety

In case of fire, a the mocouple automatically initiates the uninterrupted closing of the doors.

#### » Working safety

Equipotential bonding saddles as a standard on the cabinet help to prevent spark formation.

Your classical standard solution for the storage of hazardous substances: The CLASSIC line – highest level of fire protection and as practicable as you require



## 1 Classical wing door technology

Easy-moving wing door technology is the correct solution for a multitude of possible applications.

## 2 One-hand wing door technology

The wing doors can be easily opened with minimum effort via a handle with a single operation.

## 3 Storage shelves

Storage shelves offer the largest storage capacity and ideal use of space due to their height adjustment at a pitch of 16 mm (0.63 inch).

## 4 Pull-out shelves

Containers can be safely stored with both hands due to the easy-moving pull-out shelves.

## 5 Double pull-out stop (patented)

A double pull-out stop prevents several pull-out shelves from being pulled out at the same time.

## 6 Self-closing in case of fire

The closure control system guarantees that in case of fire the pull-out shelves are retracted and only then are the doors closed.

# CLASSIC line Type 90 at a glance

## CLASSIC standard XL with storage shelves or storage shelves and centre partition wall

	Dimensions [mm]		
	[inch]		
	Width	Depth	Height
CLASSIC standard XL 1-2	1194 47	612 24.1	2085 82.09



CLASSIC standard XL - V1



CLASSIC standard XL - V2

<b>Max. volume of largest individual container [l]/[gal]</b>	30/7.92	15/3.96
--	---------	---------

## CLASSIC standard L, ML and M with storage shelves

	Dimensions [mm]		
	[inch]		
	Width	Depth	Height
CLASSIC standard L	894 35.2	612 24.1	2085 82.09
CLASSIC standard ML	594 23.39	747 29.41	2085 82.09
CLASSIC standard M	594 23.39	612 24.1	2085 82.09



CLASSIC standard L



CLASSIC standard ML



CLASSIC standard M

<b>Max. volume of largest individual container [l]/[gal]</b>	20/5.28	15/3.96	10/2.64
--	---------	---------	---------

## CLASSIC standard XS, SL and S with storage shelves

	Dimensions [mm]		
	[inch]		
	Width	Depth	Height
CLASSIC standard XS	1194 47	612 24.1	1425 56.1
CLASSIC standard SL	594 23.39	474 18.66	1425 56.1
CLASSIC standard S	594 23.39	612 24.1	1425 56.1



CLASSIC standard XS



CLASSIC standard SL



CLASSIC standard S

<b>Max. volume of largest individual container [l]/[gal]</b>	30/7.93	15/3.96	10/2.64
--	---------	---------	---------

## CLASSIC pro XL with pull-out shelves

	Dimensions [mm]		
	[inch]		
	Width	Depth	Height
CLASSIC pro XL 1-4	1194 47	612 24.1	2085 82.09



CLASSIC pro XL - V1



CLASSIC pro XL - V2



CLASSIC pro XL - V3



CLASSIC pro XL - V4

<b>Max. volume of largest individual container [l]/[gal]</b>	30/7.93	30/7.93	30/7.93	30/7.93
--	---------	---------	---------	---------





## CLASSIC pro XL with pull-out shelves and centre partition wall

Dimensions [mm]  
[inch]

	Width	Depth	Height
CLASSIC pro XL 5-8	1194 47	612 24.1	2085 82.09



CLASSIC pro XL - V5



CLASSIC pro XL - V6



CLASSIC pro XL - V7



CLASSIC pro XL - V8

Max. volume of largest individual container [l]/[gal]

10/2.64

10/2.64

10/2.64

10/2.64

1.1

## CLASSIC pro L with pull-out shelves

Dimensions [mm]  
[inch]

	Width	Depth	Height
CLASSIC pro L 1-4	894 35.2	612 24.1	2085 82.09



CLASSIC pro L - V1



CLASSIC pro L - V2



CLASSIC pro L - V3



CLASSIC pro L - V4

Max. volume of largest individual container [l]/[gal]

20/5.28

20/5.28

20/5.28

20/5.28

## CLASSIC pro ML with pull-out shelves

Dimensions [mm]  
[inch]

	Width	Depth	Height
CLASSIC pro ML 1-4	594 23.39	747 29.41	2085 82.09



CLASSIC pro ML - V1



CLASSIC pro ML - V2



CLASSIC pro ML - V3



CLASSIC pro ML - V4

Max. volume of largest individual container [l]/[gal]

15/3.96

15/3.96

15/3.96

15/3.96

## CLASSIC pro M with pull-out shelves

Dimensions [mm]  
[inch]

	Width	Depth	Height
CLASSIC pro M 1-4	594 23.39	612 24.1	2085 82.09



CLASSIC pro M - V1



CLASSIC pro M - V2



CLASSIC pro M - V3



CLASSIC pro M - V4

Max. volume of largest individual container [l]/[gal]

10/2.64

10/2.64

10/2.64

10/2.64

## CLASSIC standard – Type 90

Your classical standard solution for the storage of hazardous substances: The CLASSIC line standard – highest level of fire protection and as practicable as you require



CLASSIC standard XL



CLASSIC standard L



CLASSIC standard M



CLASSIC standard S



# CLASSIC pro – Type 90

The cabinets of the CLASSIC line pro offer an optimum level of comfort for the storage of flammable chemicals with 90 minutes of fire protection. Discover the versatility offered by CLASSIC pro cabinets.

1.1



CLASSIC pro XL – V1



CLASSIC pro L – V3



CLASSIC pro M – V1

## Interior fittings:

- » Storage shelves, pull-out shelves and bottom tray, optionally made of powder-coated sheet steel or stainless steel.

## Construction:

- » Wing doors, powder-coated sheet steel.
- » The doors are generally right-hinged for one-door cabinets. A left-hung door can be delivered at no extra charge.
- » Outer carcass, powder-coated sheet steel.
- » Inner carcass made of high-quality decor panels.

## Colour standard version:

- » Wing doors in zinc yellow RAL 1018.
- » Carcass completely in light grey RAL 7035.
- » Individual colours possible.
- » Base in slate grey RAL 7015.

Golden yellow  
RAL 1004

Light grey  
RAL 7035

Zinc yellow  
RAL 1018

Pure white  
RAL 9010

## Ordering information



### Ref. no.

with classical wing door technology  
with one-hand wing door technology

### CLASSIC standard XL - V1

with storage shelves

29-201267-030

29-201265-030

### CLASSIC standard XL - V2

with storage shelves  
and centre partition wall

29-201267-032

29-201265-032

### Details

4 storage shelves, 1 bottom tray  
and base

2x 4 storage shelves, 2 bottom trays,  
centre partition wall and base

### Dimensions

Outer [mm]  
(width x depth x height) [inch]

1194 x 612 x 2085  
47 x 24.1 x 82.09

1194 x 612 x 2085  
47 x 24.1 x 82.09

Inner [mm]  
(width x depth x height) [inch]

1098 x 469 x 1700  
43.23 x 18.46 x 66.93

1098 x 469 x 1700  
43.23 x 18.46 x 66.93

Weight [kg]  
[lbs]

455  
1003.1

465  
1025.15

### Storage capacity/standing surface (approx. data)

Size [400 ml/11 oz]  
[1.0 l/0.26 gal]  
[1.0 l/0.26 gal]  
[2.5 l/0.66 gal]

105 spray cans  
38 cans  
45 glass lab bottles  
19 glass lab bottles

53 spray cans  
19 cans  
23 glass lab bottles  
9 glass lab bottles

### Ref. no.

#### Additional interior fittings Material

Interior fittings Stainless steel

29-51267-260

29-51267-262

Storage shelf Sheet steel

29-51267-013

29-51267-015

Storage shelf Stainless steel

29-51267-213

29-51267-215

Insert for storage shelf PP

29-51267-323

29-51267-325

Anti-slip mat Rubber

29-51267-533

29-51267-535

Locker (door hung left)

29-50000-036L

29-50000-036L

Locker (door hung right)

29-50000-036

29-50000-036

Other accessories on page 58. Other technical details and dimensions from page 60 onwards.



Tested safety at a very high level including:



**DIN EN 14470-1**  
**DIN EN 14727**



1.1

CLASSIC standard L	CLASSIC standard ML	CLASSIC standard M
with storage shelves	with storage shelves Special depth 747 mm/29.41 inch	with storage shelves
29-200967-030	29-200677-030	29-200667-030
29-200965-030	-	-
4 storage shelves, 1 bottom tray and base	4 storage shelves, 1 bottom tray and base	4 storage shelves, 1 bottom tray and base
894 x 612 x 2085 35.2 x 24.1 x 82.09	594 x 747 x 2085 23.39 x 29.41 x 82.09	594 x 612 x 2085 23.39 x 24.1 x 82.09
798 x 469 x 1700 31.42 x 18.46 x 66.93	498 x 604 x 1700 19.61 x 23.78 x 66.93	498 x 469 x 1700 19.61 x 18.46 x 66.93
365 804.69	325 716.5	265 584.22
77 spray cans 28 cans 34 glass lab bottles 14 glass lab bottles	57 spray cans 20 cans 25 glass lab bottles 10 glass lab bottles	45 spray cans 16 cans 20 glass lab bottles 8 glass lab bottles
29-50967-260	29-50677-260	29-50667-260
29-50967-013	29-50677-013	29-50667-013
29-50967-213	29-50677-213	29-50667-213
29-50967-323	29-50677-323	29-50667-323
29-50967-533	29-50677-533	29-50667-533
29-50000-036L	29-50000-036L	29-50000-036L
29-50000-036	29-50000-036	29-50000-036

## Ordering information



### Ref. no.

with classical wing door technology  
with one-hand wing door technology

### Details

### Dimensions

Outer (width x depth x height)	[mm] [inch]
Inner (width x depth x height)	[mm] [inch]
Weight	[kg] [lbs]

### Storage capacity/standing surface (approx. data)

Size	[400 ml/11 oz] [1.0 l/0.26 gal] [1.0 l/0.26 gal] [2.5 l/0.66 gal]
------	--

### Ref. no.

### Additional interior fittings Material

Interior fitting	Stainless steel
Storage shelf	Sheet steel
Storage shelf	Stainless steel
Insert for storage shelf	PP
Anti-slip mat	Rubber
Locker (door hung left)	
Locker (door hung right)	

### CLASSIC standard XS

with storage shelves

29-131267-030

29-131265-030

2 storage shelves, 1 bottom tray  
and base

1194 x 612 x 1425  
47 x 24.1 x 56.1

1098 x 469 x 1040  
43.23 x 18.46 x 40.94

380  
837.76

105 spray cans  
38 cans  
45 glass lab bottles  
19 glass lab bottles

### CLASSIC standard SL

with storage shelves  
Special depth 747 mm/29.41 inch

29-130677-030

–

2 storage shelves, 1 bottom tray  
and base

594 x 747 x 1425  
23.39 x 29.41 x 56.1

498 x 604 x 1040  
19.61 x 23.78 x 40.94

225  
496.04

75 spray cans  
20 cans  
25 glass lab bottles  
10 glass lab bottles

29-51267-261

29-51267-013

29-51267-213

29-51267-323

29-51267-533

29-50000-036L

29-50000-036

29-50677-261

29-50677-013

29-50677-213

29-50677-323

29-50677-533

29-50000-036L

29-50000-036

Other accessories on page 58. Other technical details and dimensions from page 60 onwards.



Tested safety at a very high level including:



1.1

**CLASSIC standard S**

with storage shelves

29-130667-030

-

2 storage shelves, 1 bottom tray  
and base

594 x 612 x 1425  
23.39 x 24.1 x 56.1

498 x 469 x 1040  
19.61 x 18.46 x 40.94

195  
429.9

45 spray cans  
16 cans  
20 glass lab bottles  
8 glass lab bottles

29-50667-261

29-50667-013

29-50667-213

29-50667-323

29-50667-533

29-50000-036L

29-50000-036

## Ordering information



### Ref. no.

with classical wing door technology
with one-hand wing door technology

### Details

### Dimensions

Outer (width x depth x height)	[mm] [inch]
Inner (width x depth x height)	[mm] [inch]
Weight	[kg] [lbs]

### Storage capacity/standing surface (approx. data)

Size	[400 ml/11 oz] [1.0 l/0.26 gal] [1.0 l/0.26 gal] [2.5 l/0.66 gal]
------	--

### Ref. no.

Additional interior fittings	Material
Interior fitting	Stainless steel
Tray insert	PP
Label holder	
Anti-slip mat for pull-out shelf	Rubber
Locker (door hung left)	
Locker (door hung right)	

### CLASSIC pro XL - V1

with pull-out shelves

29-201267-053

29-201265-053

6 pull-out shelves, 1 bottom tray  
and base

1194 x 612 x 2085  
47 x 24.1 x 82.09

979 x 469 x 1700  
38.54 x 18.46 x 66.93

465  
1025.15

77 spray cans  
29 cans  
35 glass lab bottles  
14 glass lab bottles

29-51267-273

29-51267-327

29-50000-001

29-51267-533

29-50000-037L

29-50000-037

### CLASSIC pro XL - V2

with pull-out shelves

29-201267-052

29-201265-052

5 pull-out shelves, 1 bottom tray  
and base

1194 x 612 x 2085  
47 x 24.1 x 82.09

979 x 469 x 1700  
38.54 x 18.46 x 66.93

465  
1025.15

77 spray cans  
29 cans  
35 glass lab bottles  
14 glass lab bottles

29-51267-272

29-51267-327

29-50000-001

29-51267-533

29-50000-037L

29-50000-037

Other accessories on page 58. Other technical details and dimensions from page 60 onwards.





Tested safety at a very high level including:



1.1

### CLASSIC pro XL - V3

with pull-out shelves

29-201267-051

29-201265-051

4 pull-out shelves, 1 bottom tray and base

1194 x 612 x 2085  
47 x 24.1 x 82.09

979 x 469 x 1700  
38.54 x 18.46 x 66.93

465  
1025.15

77 spray cans  
29 cans  
35 glass lab bottles  
14 glass lab bottles

### CLASSIC pro XL - V4

with pull-out shelves

29-201267-050

29-201265-050

3 pull-out shelves, 1 bottom tray and base

1194 x 612 x 2085  
47 x 24.1 x 82.09

979 x 469 x 1700  
38.54 x 18.46 x 66.93

465  
1025.15

77 spray cans  
29 cans  
35 glass lab bottles  
14 glass lab bottles

29-51267-271

29-51267-327

29-50000-001

29-51267-533

29-50000-037L

29-50000-037

29-51267-270

29-51267-327

29-50000-001

29-51267-533

29-50000-037L

29-50000-037

## Ordering information



### CLASSIC pro XL - V5

with pull-out shelves and centre partition wall

### CLASSIC pro XL - V6

with pull-out shelves and centre partition wall

Ref. no.	
with classical wing door technology	
with one-hand wing door technology	

29-201267-059

29-201267-058

29-201265-059

29-201265-058

### Details

2x 6 pull-out shelves, 2 bottom trays, centre partition wall and base

2x 5 pull-out shelves, 2 bottom trays, centre partition wall and base

### Dimensions

Outer (width x depth x height)	[mm] [inch]
Inner (width x depth x height)	[mm] [inch]
Weight	[kg] [lbs]

1194 x 612 x 2085  
47 x 24.1 x 82.09

1194 x 612 x 2085  
47 x 24.1 x 82.09

979 x 469 x 1700  
38.54 x 18.46 x 66.93

979 x 469 x 1700  
38.54 x 18.46 x 66.93

485  
1069.24

485  
1069.24

### Storage capacity/standing surface (approx. data)

Size	[400 ml/11 oz] [1.0 l/0.26 gal] [1.0 l/0.26 gal] [2.5 l/0.66 gal]
------	--

37 spray cans  
13 cans  
16 glass lab bottles  
6 glass lab bottles

37 spray cans  
13 cans  
16 glass lab bottles  
6 glass lab bottles

### Ref. no.

Additional interior fittings	Material
Interior fitting	Stainless steel
Tray insert	PP
Label holder	
Anti-slip mat for pull-out shelf	Rubber
Locker (door hung left)	
Locker (door hung right)	

29-51267-279

29-51267-278

29-51267-329

29-51267-329

29-50000-001

29-50000-001

29-51267-539

29-51267-539

29-50000-037L

29-50000-037L

29-50000-037

29-50000-037

Other accessories on page 58. Other technical details and dimensions from page 60 onwards.



Tested safety at a very high level including:



**DIN EN 14470-1**  
**DIN EN 14727**



1.1

### CLASSIC pro XL - V7

with pull-out shelves and centre partition wall

29-201267-057

29-201265-057

2x 4 pull-out shelves, 2 bottom trays,  
centre partition wall and base

1194 x 612 x 2085  
47 x 24.1 x 82.09

979 x 469 x 1700  
38.54 x 18.46 x 66.93

485  
1069.24

37 spray cans  
13 cans  
15 glass lab bottles  
6 glass lab bottles

### CLASSIC pro XL - V8

with pull-out shelves and centre partition wall

29-201267-056

29-201265-056

2x 3 pull-out shelves, 2 bottom trays,  
centre partition wall and base

1194 x 612 x 2085  
47 x 24.1 x 82.09

979 x 469 x 1700  
38.54 x 18.46 x 66.93

485  
1069.24

37 spray cans  
13 cans  
15 glass lab bottles  
6 glass lab bottles

29-51267-277

29-51267-329

29-50000-001

29-51267-539

29-50000-037L

29-50000-037

29-51267-276

29-51267-329

29-50000-001

29-51267-539

29-50000-037L

29-50000-037

## Ordering information



	CLASSIC pro L - V1	CLASSIC pro L - V2
	with pull-out shelves	with pull-out shelves
<b>Ref. no.</b>		
with classical wing door technology	29-200967-053	29-200967-052
with one-hand wing door technology	29-200965-053	29-200965-052
<b>Details</b>	6 pull-out shelves, 1 bottom tray and base	5 pull-out shelves, 1 bottom tray and base
<b>Dimensions</b>		
Outer (width x depth x height)	[mm] 894 x 612 x 2085 [inch] 35.2 x 24.1 x 82.09	[mm] 894 x 612 x 2085 [inch] 35.2 x 24.1 x 82.09
Inner (width x depth x height)	[mm] 679 x 469 x 1700 [inch] 26.73 x 18.46 x 66.93	[mm] 679 x 469 x 1700 [inch] 26.73 x 18.46 x 66.93
Weight	[kg] 365 [lbs] 804.69	[kg] 365 [lbs] 804.69
<b>Storage capacity/standing surface</b> (approx. data)		
Size	[400 ml/11 oz] [1.0 l/0.26 gal] [1.0 l/0.26 gal] [2.5 l/0.66 gal]	63 spray cans 22 cans 27 glass lab bottles 10 glass lab bottles
	63 spray cans 22 cans 27 glass lab bottles 10 glass lab bottles	63 spray cans 22 cans 27 glass lab bottles 10 glass lab bottles
<b>Ref. no.</b>		
<b>Additional interior fittings</b>	<b>Material</b>	
Interior fitting	Stainless steel	29-50967-273 29-50967-272
Tray insert	PP	29-50967-327 29-50967-327
Label holder		29-50000-001 29-50000-001
Anti-slip mat for pull-out shelf	Rubber	29-50967-537 29-50967-537
Locker (door hung left)		29-50000-037L 29-50000-037L
Locker (door hung right)		29-50000-037 29-50000-037

Other accessories on page 58. Other technical details and dimensions from page 60 onwards.



Tested safety at a very high level including:



1.1

### CLASSIC pro L - V3

with pull-out shelves

### CLASSIC pro L - V4

with pull-out shelves

29-200967-051

29-200967-050

29-200965-051

29-200965-050

4 pull-out shelves, 1 bottom tray and base

3 pull-out shelves, 1 bottom tray and base

894 x 612 x 2085  
35.2 x 24.1 x 82.09

894 x 612 x 2085  
35.2 x 24.1 x 82.09

679 x 469 x 1700  
26.73 x 18.46 x 66.93

679 x 469 x 1700  
26.73 x 18.46 x 66.93

365  
804.69

365  
804.69

63 spray cans  
22 cans  
27 glass lab bottles  
10 glass lab bottles

63 spray cans  
22 cans  
27 glass lab bottles  
10 glass lab bottles

29-50967-271

29-50967-270

29-50967-327

29-50967-327

29-50000-001

29-50000-001

29-50967-537

29-50967-537

29-50000-037L

29-50000-037L

29-50000-037

29-50000-037

## Ordering information



### Ref. no.

with classical wing door technology

### Details

### Dimensions

Outer (width x depth x height)	[mm] [inch]
Inner (width x depth x height)	[mm] [inch]
Weight	[kg] [lbs]

### Storage capacity/standing surface (approx. data)

Size	[400 ml/11 oz] [1.0 l/0.26 gal] [1.0 l/0.26 gal] [2.5 l/0.66 gal]
------	--

### Ref. no.

Additional interior fittings	Material
Interior fitting	Stainless steel
Tray insert	PP
Label holder	
Anti-slip mat for pull-out shelf	Rubber
Locker (door hung left)	
Locker (door hung right)	

### CLASSIC pro ML - V1

with pull-out shelves  
Special depth 747 mm/29.41 inch

29-200677-053

6 pull-out shelves, 1 bottom tray  
and base

594 x 747 x 2085  
23.39 x 29.41 x 82.09

379 x 604 x 1700  
14.92 x 23.78 x 66.93

335  
738.55

50 spray cans  
15 cans  
19 glass lab bottles  
7 glass lab bottles

### CLASSIC pro ML - V2

with pull-out shelves  
Special depth 747 mm/29.41 inch

29-200677-052

5 pull-out shelves, 1 bottom tray  
and base

594 x 747 x 2085  
23.39 x 29.41 x 82.09

379 x 604 x 1700  
14.92 x 23.78 x 66.93

335  
738.55

50 spray cans  
15 cans  
19 glass lab bottles  
7 glass lab bottles

29-50677-273

29-50677-327

29-50000-001

29-50677-537

29-50000-037L

29-50000-037

29-50677-272

29-50677-327

29-50000-001

29-50677-537

29-50000-037L

29-50000-037

Other accessories on page 58. Other technical details and dimensions from page 60 onwards.



Tested safety at a very high level including:



**DIN EN 14470-1**  
**DIN EN 14727**



1.1

### CLASSIC pro ML - V3

with pull-out shelves  
Special depth 747 mm/29.41 inch

29-200677-051

4 pull-out shelves, 1 bottom tray  
and base

594 x 747 x 2085  
23.39 x 29.41 x 82.09

379 x 604 x 1700  
14.92 x 23.78 x 66.93

335  
738.55

50 spray cans  
15 cans  
19 glass lab bottles  
7 glass lab bottles

### CLASSIC pro ML - V4

with pull-out shelves  
Special depth 747 mm/29.41 inch

29-200677-050

3 pull-out shelves, 1 bottom tray  
and base

594 x 747 x 2085  
23.39 x 29.41 x 82.09

379 x 604 x 1700  
14.92 x 23.78 x 66.93

335  
738.55

50 spray cans  
15 cans  
19 glass lab bottles  
7 glass lab bottles

29-50677-271

29-50677-327

29-50000-001

29-50677-537

29-50000-037L

29-50000-037

29-50677-270

29-50677-327

29-50000-001

29-50677-537

29-50000-037L

29-50000-037

## Ordering information



### Ref. no.

with classical wing door technology

### Details

### Dimensions

Outer (width x depth x height)	[mm] [inch]
Inner (width x depth x height)	[mm] [inch]
Weight	[kg] [lbs]

### Storage capacity/standing surface (approx. data)

Size	[400 ml/11 oz] [1.0 l/0.26 gal] [1.0 l/0.26 gal] [2.5 l/0.66 gal]
------	--

### Ref. no.

Additional interior fittings	Material
Interior fitting	Stainless steel
Tray insert	PP
Label holder	
Anti-slip mat for pull-out shelf	Rubber
Locker (door hung left)	
Locker (door hung right)	

### CLASSIC pro M - V1

with pull-out shelves

29-200667-053

6 pull-out shelves, 1 bottom tray  
and base

594 x 612 x 2085  
23.39 x 24.1 x 82.09

379 x 469 x 1700  
14.92 x 18.46 x 66.93

275  
606.27

46 spray cans  
16 cans  
20 glass lab bottles  
8 glass lab bottles

### CLASSIC pro M - V2

with pull-out shelves

29-200667-052

5 pull-out shelves, 1 bottom tray  
and base

594 x 612 x 2085  
23.39 x 24.1 x 82.09

379 x 469 x 1700  
14.92 x 18.46 x 66.93

275  
606.27

46 spray cans  
16 cans  
20 glass lab bottles  
8 glass lab bottles

29-50667-273

29-50667-327

29-50000-001

29-50667-537

29-50000-037L

29-50000-037

29-50667-272

29-50667-327

29-50000-001

29-50667-537

29-50000-037L

29-50000-037

Other accessories on page 58. Other technical details and dimensions from page 60 onwards.





Tested safety at a very high level including:



1.1

<b>CLASSIC pro M - V3</b>	<b>CLASSIC pro M - V4</b>
with pull-out shelves	with pull-out shelves
<b>29-200667-051</b>	<b>29-200667-050</b>
4 pull-out shelves, 1 bottom tray and base	3 pull-out shelves, 1 bottom tray and base
594 x 612 x 2085 23.39 x 24.1 x 82.09	594 x 612 x 2085 23.39 x 24.1 x 82.09
379 x 469 x 1700 14.92 x 18.46 x 66.93	379 x 469 x 1700 14.92 x 18.46 x 66.93
275 606.27	275 606.27
46 spray cans 16 cans 20 glass lab bottles 8 glass lab bottles	46 spray cans 16 cans 20 glass lab bottles 8 glass lab bottles
<b>29-50667-271</b>	<b>29-50667-270</b>
<b>29-50667-327</b>	<b>29-50667-327</b>
<b>29-50000-001</b>	<b>29-50000-001</b>
<b>29-50667-537</b>	<b>29-50667-537</b>
<b>29-50000-037L</b>	<b>29-50000-037L</b>
<b>29-50000-037</b>	<b>29-50000-037</b>

## Accessories - varied and flexible

Adapt the cabinets of the CLASSIC line to your requirements even better with the large variety of accessories offered. To make your workplace more efficient and safe.

---



### Exhaust air systems

Monitoring exhaust air systems help prevent explosion risks in work areas, see programme section 7.



### Earthing cables

Through the equipotential bonding saddles on the cabinet as a standard and an additional earthing cable with crocodile clip in the interior, conductive containers can be directly connected to the earthing cable as per TRGS 727.



### Anti-slip mat

Anti-slip mats can prevent containers from inadvertently slipping. So everything stays where it belongs (see additional interior fittings)



### Labelling system

When the doors are opened, the label holder folds forward for easier reading. Up to seven holders can be attached and the scannable labels can be easily changed.



### Transport trolley

with antistatic rollers to safely transport hazardous substances.



### Red-Box

for safely storing documents exactly where they are needed.



### Absorber cloths

Absorber cloths are specially designed for use with chemicals and are thus ideal for picking up spilled hazardous substances.



### Locker

bolted directly in the safety storage cabinet as additionally protected access control (see additional interior fittings)

**Accessories**

Pipe penetration (reclosable)

Pipe penetration

Red-Box

**Ref. no.**

on request

29-70000-048

2.233.04

**Optional extras**

Transport trolley for flammable medi

Earthing cable with crocodile clip

Exhaust air system or ventilator

Safety container

Absorber

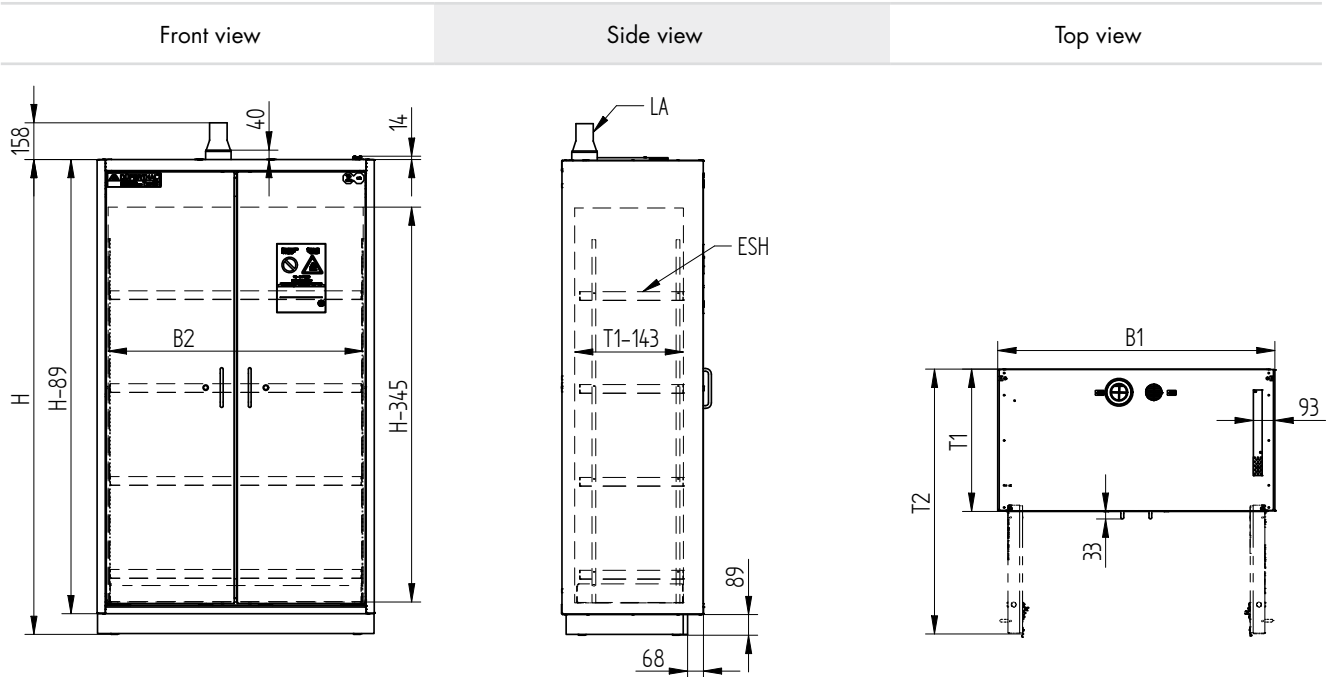
7.02.100

1.806.63

See programme section 7 or at [www.dueperthal.com](http://www.dueperthal.com)See programme section 8 or at [www.dueperthal.com](http://www.dueperthal.com)See programme section 10 or at [www.dueperthal.com](http://www.dueperthal.com)

# Tech specs CLASSIC standard – Type 90

## Technical details - CLASSIC standard

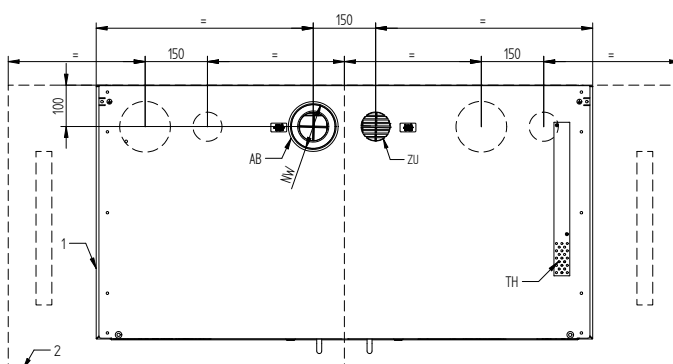


Model size		S	SL	XS	M	ML	L	LL	XL	XXL
<b>H</b>	[mm]	1385	1385	1385	2045	2045	2045	2045	2045	2045
	[inch]	54.53	54.53	54.53	80.51	80.51	80.51	80.51	80.51	80.51
<b>B1</b>	[mm]	594	594	1194	594	594	894	894	1194	1650
	[inch]	23.39	23.39	47	23.39	23.39	35.2	35.2	47	64.96
<b>B2</b>	[mm]	498	498	1098	498	498	798	798	1098	2x 746
	[inch]	19.61	19.61	43.23	19.61	19.61	31.42	31.42	43.23	2x 29.37
<b>T1</b>	[mm]	612	747	612	612	747	612	747	612	747
	[inch]	24.1	29.41	24.1	24.1	29.41	24.1	29.41	24.1	29.41
<b>T2</b>	[mm]	1100	1235	1140	1100	1235	990	1125	1140	1483
	[inch]	43.31	48.62	44.88	43.31	48.62	38.98	44.29	44.88	56.61
<b>Doors</b>		1	1	2	1	1	2	2	2	2

LA: Connection socket NW 75 (2.95)

ESH: Adjustable heights and standing surface dimensions

### Top view - more details



- 1: Cabinet size S-XL
- 2: Cabinet size XXL
- NW: 110 (4.33) with adapter 75 (2.95)
- AB: Exhaust air connection
- ZU: Air supply
- TH: Thermocouple

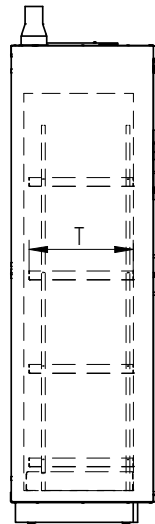
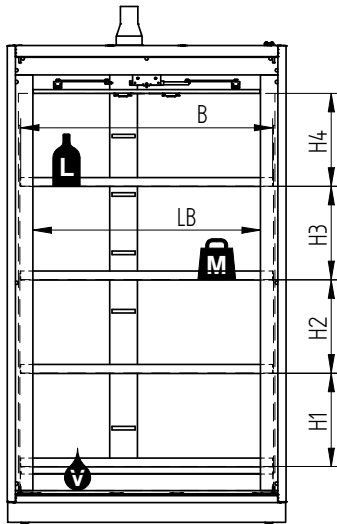


# Tech specs CLASSIC standard – Type 90

## Technical details - CLASSIC standard

Front view

Side view



Max. container height [mm]  
[inch]

Model size	S   SL   XS		M   ML L   LL XL   XXL	
2 storage shelves	<b>H1</b>	478	798	
		18.82	31.42	
	<b>H4</b>	457	797	
		18	31.38	
3 storage shelves	<b>H1</b>	318	542	
		12.52	21.34	
	<b>H2</b>	318	526	
		12.52	20.71	
<b>H4</b>	297	525		
	11.7	20.67		
4 storage shelves	<b>H1</b>	–	398	
		–	15.67	
	<b>H2</b>	–	398	
		–	15.67	
<b>H3</b>	–	398		
	–	15.67		
<b>H4</b>	–	397		
	–	15.63		



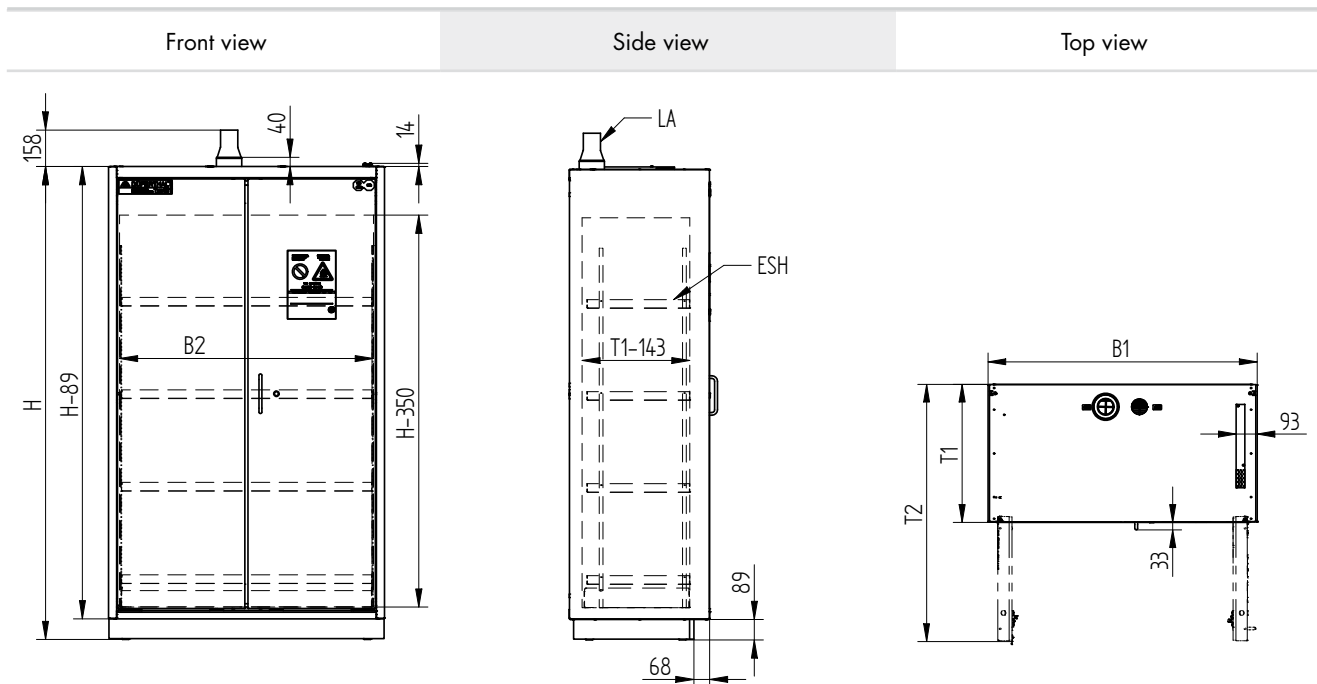
Model size		S	SL	XS	M	ML	L	LL	XL	XL (CP)	XXL
<b>B</b>	[mm]	479	479	1079	479	479	779	779	1079	2x 522	2x 727
	[inch]	18.86	18.86	42.48	18.86	18.86	30.67	30.67	42.48	2x 20.55	2x 28.62
<b>LB</b>	[mm]	374	374	974	374	374	674	674	974	2x 479	2x 684
	[inch]	14.72	14.72	38.35	14.72	14.72	26.54	26.54	38.35	2x 18.86	2x 26.93
<b>T</b>	[mm]	445	580	445	445	580	445	580	445	445	580
	[inch]	17.52	22.83	17.52	17.52	22.83	17.52	22.83	17.52	17.52	22.83
<b>M</b>	[kg]	75	75	75	75	75	75	75	75	75	75
	[lbs]	165.35	165.35	165.35	165.35	165.35	165.35	165.35	165.35	165.35	165.35
<b>L</b>	[l]	10	15	30	10	15	20	25	30	15	25
	[gal]	2.64	3.96	7.93	2.64	3.96	5.28	6.6	7.93	3.96	6.6
<b>V</b>	[l]	11	16.5	33	11	16.5	22	27.5	33	16.5	27.5
	[gal]	2.91	4.36	8.72	2.91	4.36	5.81	7.26	8.72	4.36	7.26
<b>Tare weight</b>	[kg]	195	225	380	265	325	365	410	455	465	866
	[lbs]	429.9	496.04	837.76	584.22	716.5	804.69	903.9	1003.1	1025.15	1909.2
<b>Max. additional load</b>	[kg]	240	240	240	360	360	360	360	360	360	2x 360
	[lbs]	529.11	529.11	529.11	793.66	793.66	793.66	793.66	793.66	793.66	2x 793.66

- B: Inner width of standing surface, in millimetres
- LB: Clear width (doors), in millimetres
- T: Inner depth of standing surface, in millimetres
- M: Load bearing capacity per storage shelf (uniformly distributed), in kilograms
- L: Maximum volume of the largest individual container, in litres
- V: Max. collection volume, in litres
- CP: (with) centre partition wall



# Tech specs CLASSIC standard – Type 90

**Technical details** - CLASSIC standard with one-hand wing door technology

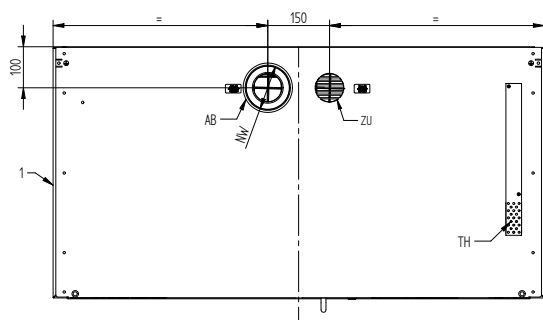


Model size		XS	L	LL	XL
<b>H</b>	[mm]	1385	2045	2045	2045
	[inch]	54.53	80.51	80.51	80.51
<b>B1</b>	[mm]	1194	894	894	1194
	[inch]	47	35.2	35.2	47
<b>B2</b>	[mm]	1098	798	798	1098
	[inch]	43.23	31.42	31.42	43.23
<b>T1</b>	[mm]	612	612	747	612
	[inch]	24.1	24.1	29.41	24.1
<b>T2</b>	[mm]	1140	990	1125	1140
	[inch]	44.88	38.98	44.29	44.88
<b>Doors</b>		2	2	2	2

LA: Connection socket NW 75 (2.95)

ESH: Adjustable heights and standing surface dimensions

## Top view - more details



- 1: Cabinet size XS-XL
- NW: 110 (4.33) with adapter 75 (2.95)
- AB: Exhaust air connection
- ZU: Air supply
- TH: Thermocouple

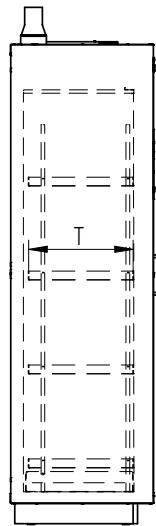
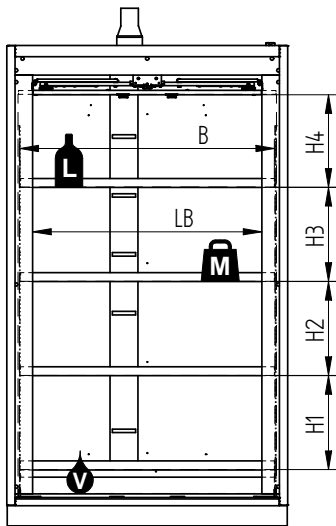


# Tech specs CLASSIC standard – Type 90

## Dimensions | Adjustment height - CLASSIC standard with one-hand wing door technology

Front view

Side view



Max. container height [mm]  
[inch]

Model size		XS	L   LL   XL
2 storage shelves	H1	478 18.82	798 31.42
	H4	452 17.8	792 31.18
3 storage shelves	H1	318 12.52	542 21.34
	H2	318 12.52	526 20.71
	H4	292 11.5	520 20.47
4 storage shelves	H1	–	398 15.67
	H2	–	398 15.67
	H3	–	398 15.67
	H4	–	392 15.43

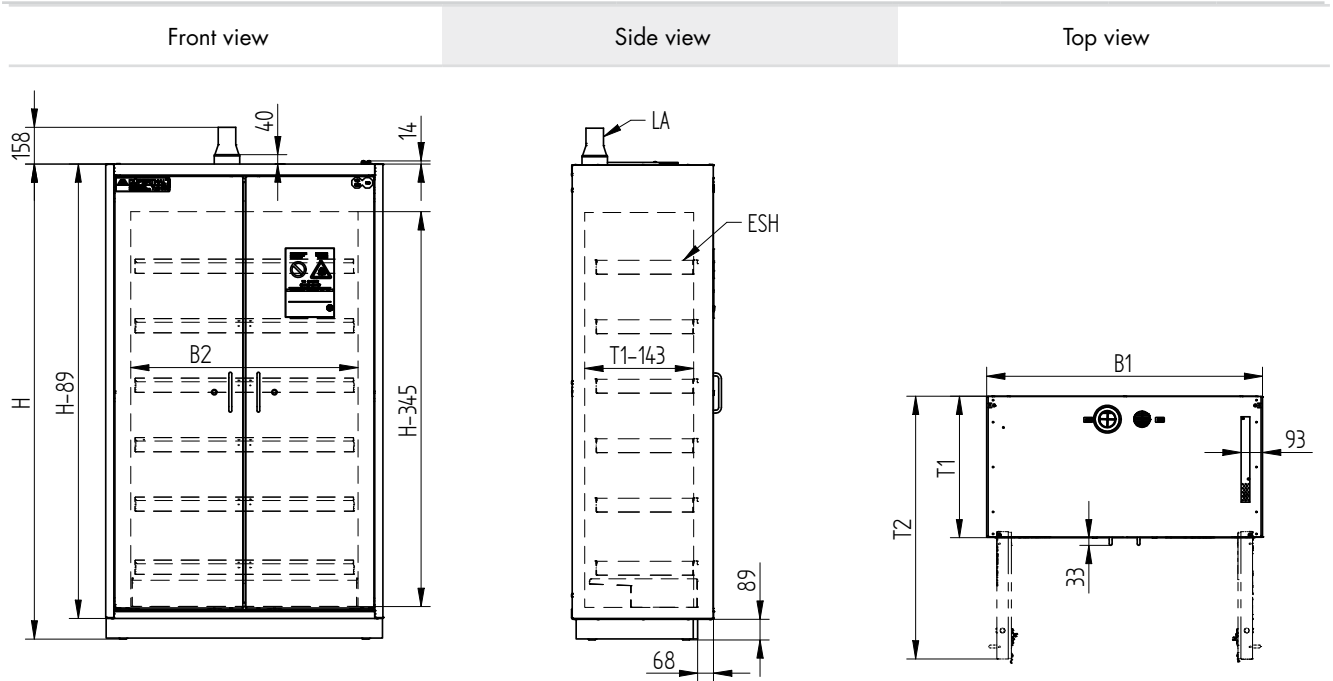
1.1

Model size		XS	L	LL	XL	XL (CP)
<b>B</b>	[mm]	1079	779	779	1079	2x 522
	[inch]	42.48	30.67	30.67	42.48	2x 20.55
<b>LB</b>	[mm]	974	674	674	974	2x 479
	[inch]	38.35	26.54	26.54	38.35	2x 18.86
<b>T</b>	[mm]	445	445	580	445	445
	[inch]	17.52	17.52	22.83	17.52	17.52
<b>M</b>	[kg]	75	75	75	75	75
	[lbs]	165.35	165.35	165.35	165.35	165.35
<b>L</b>	[l]	30	20	25	30	15
	[gal]	7.93	5.28	6.6	7.93	3.96
<b>V</b>	[l]	33	22	27.5	33	16.5
	[gal]	8.72	5.81	7.26	8.72	4.36
<b>Tare weight</b>	[kg]	380	365	410	455	465
	[lbs]	837.76	804.69	903.9	1003.1	1025.15
<b>Max. additional load</b>	[kg]	240	360	360	360	360
	[lbs]	529.11	793.66	793.66	793.66	793.66

- B: Inner width of standing surface, in millimetres
- LB: Clear width (doors), in millimetres
- T: Inner depth of standing surface, in millimetres
- M: Load bearing capacity per storage shelf (uniformly distributed), in kilograms
- L: Maximum volume of the largest individual container, in litres
- V: Max. collection volume, in litres
- CP: (with) centre partition wall

# Tech specs CLASSIC pro – Type 90

## Technical details - CLASSIC pro

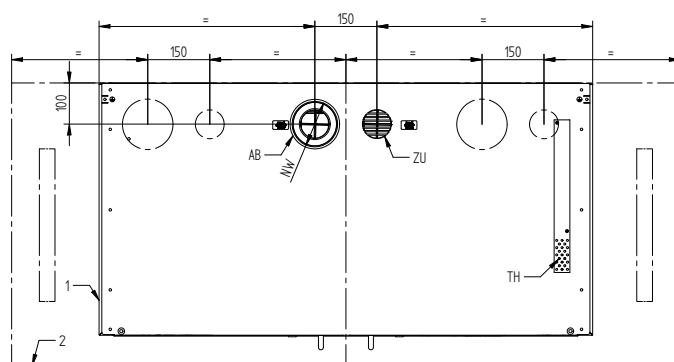


Model size		M	ML	L	LL	XL	XXL
<b>H</b>	[mm] [inch]	2045 80.51	2045 80.51	2045 80.51	2045 80.51	2045 80.51	2045 80.51
<b>B1</b>	[mm] [inch]	594 23.39	594 23.39	894 35.2	894 35.2	1194 47	1650 64.96
<b>B2</b>	[mm] [inch]	379 14.92	379 14.92	679 23.73	679 23.73	979 38.54	2x 627 2x 24.69
<b>T1</b>	[mm] [inch]	612 24.1	747 29.41	612 24.1	747 29.41	612 24.1	747 29.41
<b>T2</b>	[mm] [inch]	1100 43.31	1235 48.62	990 38.98	1125 44.29	1140 44.88	1483 56.61
<b>Doors</b>		1	1	2	2	2	2

LA: Connection socket NW 75 (2.95)

ESH: Adjustable heights and standing surface dimensions

### Top view - more details



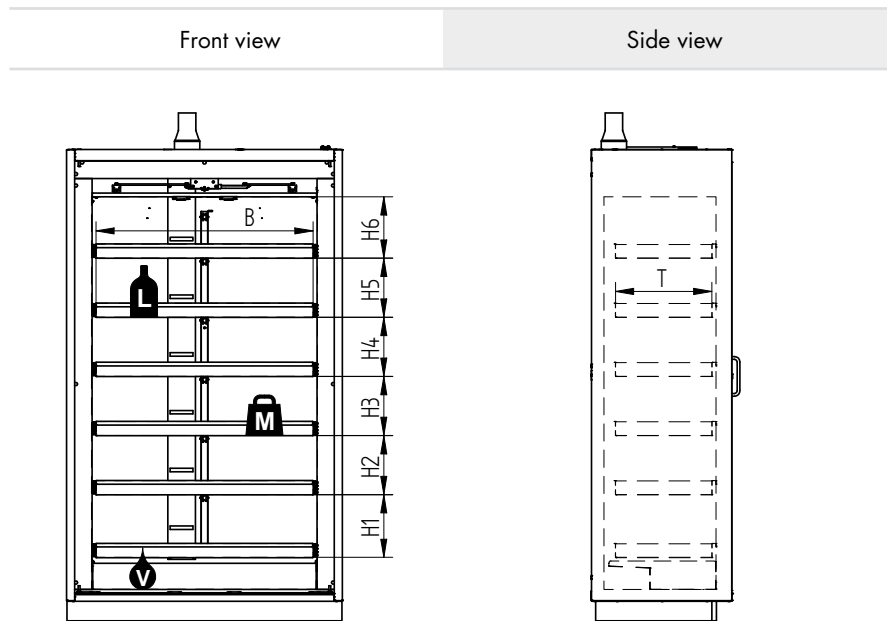
- 1: Cabinet size M-XL
- 2: Cabinet size XXL
- NW: 110 (4.33) with adapter 75 (2.95)
- AB: Exhaust air connection
- ZU: Air supply
- TH: Thermocouple





# Tech specs CLASSIC pro – Type 90

## Dimensions | Adjustment heights - CLASSIC pro



Max. container height [mm]  
[inch]

Model size	M   ML L   LL XL   XXL	
	3 pull-out shelves	<b>H1</b>
	<b>H2</b>	527 20.74
	<b>H6</b>	505 19.88
4 pull-out shelves	<b>H1</b>	399 15.71
	<b>H2</b>	399 15.71
	<b>H3</b>	383 15.08
	<b>H6</b>	377 14.84
5 pull-out shelves	<b>H1</b>	319 12.56
	<b>H2</b>	319 12.56
	<b>H3</b>	319 12.56
	<b>H4</b>	303 11.89
	<b>H6</b>	297 11.7
6 pull-out shelves	<b>H1</b>	271 10.67
	<b>H2</b>	255 10.04
	<b>H3</b>	255 10.04
	<b>H4</b>	255 10.04
	<b>H5</b>	255 10.04
	<b>H6</b>	265 10.43

1.1

Model size		M	ML	L	LL	XL	XL (CP)	XXL
<b>B</b>	[mm] [inch]	340 13.39	340 13.39	640 25.2	640 25.2	940 37.01	442 17.4	2x 588 2x 23.15
<b>T</b>	[mm] [inch]	417 16.42	552 21.73	417 16.42	552 21.73	417 16.42	417 16.42	552 21.73
<b>M</b>	[kg] [lbs]	40 88.18	40 88.18	60 132.28	60 132.28	60 132.28	40 88.18	60 132.28
<b>L</b>	[l] [gal]	10 2.64	15 3.96	20 5.28	25 6.6	30 7.93	10 2.64	25 6.6
<b>V</b>	[l] [gal]	11 2.91	16.5 4.36	22 5.81	27.5 7.26	33 8.72	11 2.91	27.5 7.26
<b>Tare weight</b>	[kg] [lbs]	275 606.27	335 738.55	365 804.69	420 925.94	465 1025.15	485 1069.24	900 1984.16
<b>Max. additional load</b>	[kg] [lbs]	240 529.11	240 529.11	240 529.11	360 793.66	360 793.66	360 793.66	360 793.66

- B: Inner width of standing surface, in millimetres
- T: Inner depth of standing surface, in millimetres
- M: Load bearing capacity per pull-out shelf (evenly distributed), in kilograms
- L: Maximum volume of the largest individual container, in litres
- V: Max. collection volume, in litres
- CP: (with) centre partition wall

## Comfort Service Agreement

We thank you for the trust you have shown in purchasing DÜPERTHAL safety storage cabinets.

Please note that according to BetrSichV, TRGS 526, TRGS 510, ArbStättV and the maintenance interval indicated by the manufacturer, all safety-relevant features have to be checked by a qualified person once a in accordance with TRBS 1203. In order to meet these requirements and to guarantee the safe function of your safety storage cabinets, we recommend that the cabinets should be checked once a year by our service technicians.

### Your benefits: DÜPERTHAL Comfort\* Service Agreement

- » 5-year manufacturer's guarantee. \*\*
- » First inspection is free of charge.



### Your economic advantage

- » 5-year manufacturer's guarantee. \*\*
- » First inspection is free of charge.
- » Cost saving with regard to repairs, time expenditure is not billed separately (included in lump sum).
- » Travel expenses are included in the lump sum.
- » Guarantee systematic monitoring of your safety equipment for audits. We remind you about upcoming deadlines.

### Your technical advantage

- » Your cabinet's protective function is constantly maintained.
- » Support from trained and certified service technicians.
- » Inspection of safety storage cabinets and exhaust air filter systems.



**Preventive maintenance.  
Sustainable maintenance.  
Our service sets new standards.**

#### Your contact person - Service

Phone: +49 6188 9139-166

E-mail: [service@dueperthal.com](mailto:service@dueperthal.com)



DÜPERTHAL is certified acc. to  
DIN EN ISO 9001



# DÜPERTHAL Comfort\* service agreement

## Customer:

(please specify exact address and phone no.)

## Service agreement no.:

between the recipient as the customer and the DÜPERTHAL SICHERHEITSTECHNIK GmbH & Co. KG  
Frankenstrasse 3  
63791 Karlstein, Germany

In Germany, the annual inspection of safety storage cabinets including proof of the test is legally required by the BetrSichV, TRGS 526, TRGS 510, and the ArbStättV legislation. Employers are responsible for implementation.

### The DÜPERTHAL Comfort\* Service Agreement includes the following services:

- » Annual safety inspection and maintenance
- » Test certificate and test labe
- » Time expenditure for repairs (spare parts are billed separately)
- » Travel expenses
- » 5-year manufacturer's guarantee\*\*



## Number of safety storage cabinets:

(please enter quantity)

1	
2-3	
4 or more	

## Lump sum per safety storage cabinet/year:


## Number of exhaust air filter systems:

(please enter quantity)

1	
2-3	
4 or more	

## Lump sum per exhaust air filter system/year:


The inspection and maintenance covers all safety-relevant parts, such as fire protection and air seals, fusible links, ventilation openings, door closers and locking systems as well as insulation. Furthermore, all mechanical components are checked to ensure that they are working properly and an exhaust air measurement is taken.

Deviations from this agreement are only valid if they have been agreed on in writing by both parties to the contract.

Otherwise the service terms and conditions (supplement) must be complied with.

Karlstein,

Date

Place / Date

DÜPERTHAL SICHERHEITSTECHNIK GmbH & Co. KG

CLIENT

Date / Signature / Company stamp

Date / Signature / Company stamp

\* Only valid for cabinets not older than 2 years (from delivery date). \*\* Manufacturer's guarantee does not apply to cabinets of other manufacturers.

# Delivery checklist for safety storage cabinets

Simply complete and send back by e-mail to [info@dueperthal.com](mailto:info@dueperthal.com)

Dear Customer,

This checklist is part of the order. We would like to deliver and align your safety storage cabinets at the place of use. To ensure a timely and smooth delivery at the preferred installation location / place of use without complications, we need you to fill in the information below. If information is incomplete or received too late, substantial additional costs may arise, which we have to pass on to you. Please take notice of the delivery date mentioned in the order confirmation.

1. Order data	
<b>Customer</b>	
Customer no.:	
Company:	
Post code/city:	
Name:	
Phone:	
Department:	
<b>PO no:</b>	
<b>Order no:</b>	

Delivery address	
Company:	
Contact person on site:	
Phone:	
Street:	
Post code/city:	
Cabinet model:	
Dimensions: (W x D x H in mm)	
Weight: (in kg)	

2. Installation location and delivery date	
2.1	When will the rooms/ transport routes be ready for use? (This includes all lifts, staircases, corridors on the way)
2.2	Delivery possible from _____ to _____
2.3	Installation location (building, room):
2.4	Person to be notified by phone:
2.5	Phone:

3. Access route/transport route outside the building	
3.1	Is access possible with a 26 t truck, min. dimensions 3 x 1.2 x 4 m (W x L x H)? <input type="checkbox"/> Yes, road width approx. W _____ x H _____ m <input type="checkbox"/> no <input type="checkbox"/> Roofing – max. clearance height only _____ m <input type="checkbox"/> Bridge – max. clearance height _____ m <input type="checkbox"/> Blocked, because _____ <input type="checkbox"/> Route not suitable, because _____
3.2	Distance to the building? _____ m
3.3	Road surface?
3.4	Pedestrian zone <input type="checkbox"/> yes <input type="checkbox"/> no. Delivery time from _____ to _____
3.5	At ground level <input type="checkbox"/> yes <input type="checkbox"/> no
3.5	Steps into the building <input type="checkbox"/> yes, _____ steps <input type="checkbox"/> no
3.6	Loading ramp available <input type="checkbox"/> yes <input type="checkbox"/> no
3.7	Can the truck bridge the steps by means of its rear lifting platform? <input type="checkbox"/> yes <input type="checkbox"/> no
3.8	Parking facilities <input type="checkbox"/> yes <input type="checkbox"/> no
3.9	Forklift truck & driver available <input type="checkbox"/> yes <input type="checkbox"/> no
3.10	Best access route by road?

4. Transport route inside the building	
4.1	Is the load bearing capacity of the transport route sufficient for the weight listed above? <input type="checkbox"/> yes <input type="checkbox"/> no
4.2	Installation location on ground floor <input type="checkbox"/> yes <input type="checkbox"/> no
4.3	Installation location in basement/on upper floor <input type="checkbox"/> yes, _____ floor

5. Lift	
5.1	Lift available? <input type="checkbox"/> yes <input type="checkbox"/> no
5.2	Lift usable? <input type="checkbox"/> yes <input type="checkbox"/> no
5.3	Load bearing capacity in kg
5.4	Usable inner carcass (W x D x H)
5.5	Door clearance dimensions (W x H)



## 6. Stairs

6.1 Transport by stairs?

yes, \_\_\_\_\_ floor  no

**Note:** In case of transport to buildings without a service lift and delivery above ground floor, any additional costs arising for additional personnel, equipment, load crane, etc. will be borne by the customer and will be billed separately at cost.

6.2 What kind of stairs are there on site? Please mark with a cross!

**Version 1**

A = Stair width = \_\_\_\_\_ cm

B = Landing depth = \_\_\_\_\_ cm

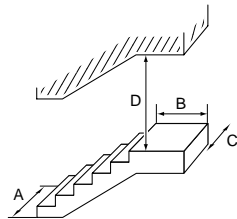
C = Landing width = \_\_\_\_\_ cm

D = Lintel height = \_\_\_\_\_ cm

No. of steps = \_\_\_\_\_

Step depth = \_\_\_\_\_ cm

Step height = \_\_\_\_\_ cm



**Version 2**

A = Stair width = \_\_\_\_\_ cm

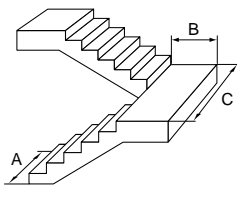
B = Landing depth = \_\_\_\_\_ cm

C = Landing width = \_\_\_\_\_ cm

No. of steps = \_\_\_\_\_

Step depth = \_\_\_\_\_ cm

Step height = \_\_\_\_\_ cm



**Version 3**

A = Stair width = \_\_\_\_\_ cm

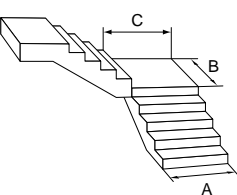
B = Landing depth = \_\_\_\_\_ cm

C = Landing width = \_\_\_\_\_ cm

No. of steps = \_\_\_\_\_

Step depth = \_\_\_\_\_ cm

Step height = \_\_\_\_\_ cm



**When giving the dimensions, please consider all obstructions like banisters, radiators or similar objects!**

6.3 Do all stairs along the transport route correspond to the version marked above?

yes  no. Differences:

6.4 Other stairs:

Description:

Sketch

**Note:** Delivery via a spiral staircase is only conditionally possible; please arrange with us a transport route inspection by our carrier in good time!

6.6 Number of stairs in total?

6.7 Type of stairs (e.g. concrete, wood, steel, etc.)?

To the building \_\_\_\_\_

Inside the building \_\_\_\_\_

**Note:** Rubber edges on steps may be damaged; we cannot accept liability for this.

6.8 Protruding edges  yes \_\_\_\_\_ cm overhang  no

6.9 Can each individual step be loaded with the cabinet's weight?  yes  no

## 7. Doors

7.1 How many doors are there along the transport route?

7.2 Door dimensions	Clear height [cm]	Clear width [cm]	Space available behind [m]
Door 1			
Door 2			
Door 3			
Door 4			
Door 5			

## 8. Requirements for the installation location/ceiling load

Please take into account the allowable ceiling/floor load at the installation location for all safety storage cabinets. In particular, the SUPREME plus XL and XXL safety cabinets for pressurised gas cylinders may not be installed without consulting a structural engineer first if the ceiling load is less than 600 kg/m<sup>2</sup>.

8.1 The surface must be level and flat and be able to bear the weight of the safety cabinet when fully loaded. Is the load bearing capacity of the installation location sufficient for the weight listed above?  
 yes  no

8.2 Is the floor at the installation location free of cables and underfloor heating?  
 yes  no

**Note:** Furthermore, the installation location must ensure that the safety storage cabinet

- cannot be damaged by vehicles.
- is not exposed to any direct or indirect heat source.
- is protected against moisture.
- is not exposed to an operating temperature below -5 °C or above +45 °C.

The lump sum price quoted for transport is subject to the condition that the installation location (place of use) is freely accessible and it is possible to complete the transport on site. The customer assures that they are aware of the dimensions of the safety storage cabinets to be delivered and that their information regarding the conditions on site at the place of delivery is completely accurate. Any additional costs will be borne by the customer. These may arise from differences between the information given above and the actual situation on site and consequent further action necessary to be taken, such as exceeding the delivery time and/or interventions in the building fabric (widening of door openings, dismantling and reassembly of banisters, etc.) or the installation of a crane to bring the safety storage cabinet to the place requested by the customer. If the transport company refuses transport for reasons of risk and the customer nevertheless insists on installation, all of the customer's rights of recourse are cancelled should the mentioned risks materialise, unless a case of deliberate intent or gross negligence exists.

Date / Signature / Company stamp

Offering you a personal service

---

## Intelligent technology – Great service

There is more to safety than simply buying a safety storage cabinet. This is why we offer you our certified knowledge, comprehensive service and expertise – supporting you before, during and especially after your decision to buy a DÜPERTHAL safety storage cabinet. For a reassuring feeling of having done everything within your power.

**Individual advice.**  
**Intelligent solutions.**  
**Safety requires experts.**

### **Your contact person – for Germany**

Phone: +49 6188 9139-0

E-mail: [info@dueperthal.com](mailto:info@dueperthal.com)

### **Your contact person – for all other countries**

Phone: +49 6188 9139-150

E-mail: [info@dueperthal.com](mailto:info@dueperthal.com)

**Preventive inspections.**  
**Sustainable maintenance.**  
**Our service sets new standards.**

### **Your contact person – Technical Service**

Phone: +49 6188 9139-166

E-mail: [service@dueperthal.com](mailto:service@dueperthal.com)



**Safety means responsibility.**

DÜPERTHAL is one of the leading manufacturers of safety storage cabinets. There are good reasons for choosing DÜPERTHAL safety technology. Find out more about us and our entire product range on [www.dueperthal.com](http://www.dueperthal.com).

**We look forward to your call!**

Mondays to Thursdays from 8.00 am to 5.00 pm  
Fridays from 8.00 am to 4.00 pm

DÜPERTHAL Sicherheitstechnik GmbH & Co. KG  
Frankenstrasse 3 | 63791 Karlstein | Germany



# Metric Equivalents

## Commonly used measurements

[rounded]

Volume / Liquid measure equivalents

### Containers & Drum Sizes

[ounce]	4	8	16	32	[pint]	1	[quart]	1	2	[gallon]	1	1.32	1 ½	2
<b>[litre]</b>	<b>0.12</b>	<b>0.24</b>	<b>0.5</b>	<b>1</b>	<b>0.5</b>	<b>1</b>	<b>2</b>	<b>4</b>	<b>5</b>	<b>6</b>	<b>7.5</b>			

[gallon]	2 ½	2.64	3	3 ½	4	5	6	6.6	8	10	12	15.9	30	55
<b>[litre]</b>	<b>9.5</b>	<b>10</b>	<b>11</b>	<b>13</b>	<b>15</b>	<b>19</b>	<b>23</b>	<b>25</b>	<b>30</b>	<b>38</b>	<b>45</b>	<b>60</b>	<b>110</b>	<b>200</b>

[inch]	¼	⅜	½	¾	1 ½	2
<b>[mm]</b>	<b>6</b>	<b>10</b>	<b>13</b>	<b>19</b>	<b>38</b>	<b>51</b>

### Sheet Steel Sizes

[gauge steel]	24	18	16	14
<b>[mm]</b>	<b>0.5</b>	<b>1</b>	<b>1.5</b>	<b>1.9</b>

### Weight Equivalents

[pounds]	60	132	165	350	600	1000	1500
<b>[kg]</b>	<b>27</b>	<b>60</b>	<b>75</b>	<b>159</b>	<b>272</b>	<b>454</b>	<b>680</b>

### Pressure and Temperature

[psig]	3	5	[Fahrenheit]	34°	50°	59°	68°	122°	158°	165°	325°	392°
<b>[bar]</b>	<b>0.2</b>	<b>0.35</b>	<b>[Celcius]</b>	<b>1°</b>	<b>10°</b>	<b>15°</b>	<b>20°</b>	<b>50°</b>	<b>70°</b>	<b>74°</b>	<b>163°</b>	<b>200°</b>



### Conversion Chart

Fahrenheit to Celcius:  
 $(^{\circ}\text{F} - 32) \times 0.5555 = ^{\circ}\text{C}$

Inches to Millimeters:  
Multiply by 25.4

Inches to Centimeters:  
Multiply by 2.54

Feet to Meters:  
Multiply by 0.3048

Feet to Centimeters:  
Multiply by 30.48

Feet to Millimeters:  
Multiply by 304.8

Ounces to Grams:  
Multiply by 28.35

Pounds to Kilograms:  
Multiply by 0.4536

Gallons to Litres:  
Multiply by 3.785

DPVT B.V. DUPA Veiligheidstechniek

Pottenbakkerstraat 18 | 4871 EP Etten-Leur

Tel +31 76 204 30 15

[info@dupa.nl](mailto:info@dupa.nl) | [www.dupa.nl](http://www.dupa.nl)